

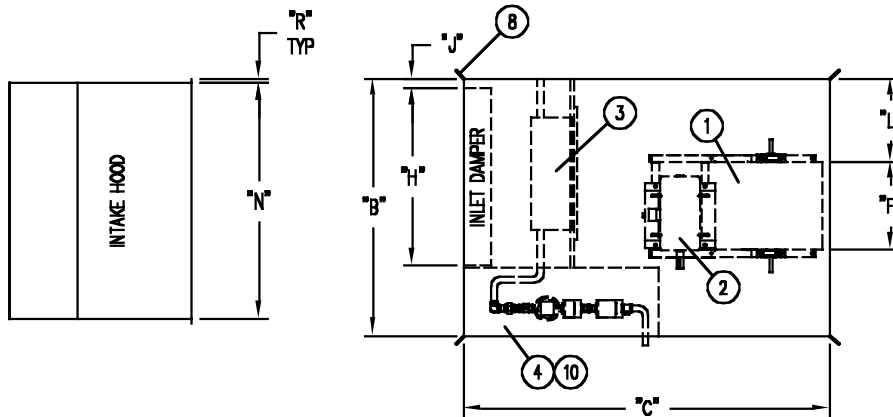
Dimensions

Horizontal Base Unit without V-Bank

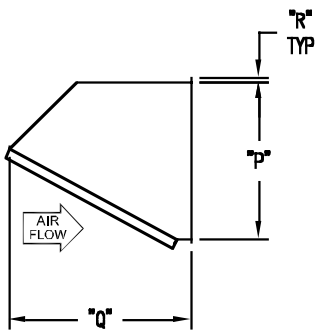
C000506

UNIT COMPONENTS

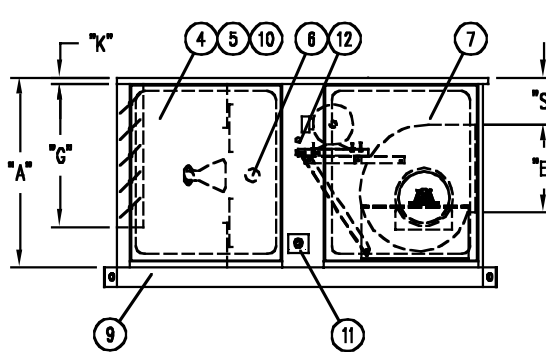
- | | | | |
|---------------------------|---------------------------------------|----------------|---------------------------|
| 1. Centrifugal supply fan | 4. Control cabinet | 7. Access door | 10. Manifold compartment |
| 2. Fan motor | 5. Hinged control cabinet access door | 8. Lifting lug | 11. Gas connection |
| 3. Line burner | 6. Observation port | 9. Unit base | 12. Electrical connection |



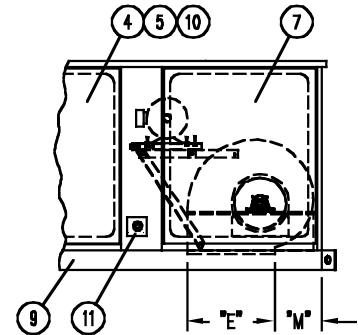
PLAN VIEW



FRONT VIEW
(SIDE DISCHARGE)



FRONT VIEW
(SIDE DISCHARGE)



FRONT VIEW
(BOTTOM DISCHARGE)

RIGHT HAND SHOWN, LEFT HAND IS OPPOSITE

Model	Blower Size	Dimensions								
		A	B	C	E	F	G	H	J	K
035	10" x 10"	36	42	68	11 ³ / ₈	13 ¹ / ₈	25 ¹ / ₂	27	1 ¹ / ₄	1 ⁵ / ₁₆
070	12" x 12"	40	52	76	13 ⁷ / ₁₆	15 ⁵ / ₈	30 ¹ / ₄	37 ¹ / ₂	1 ¹ / ₄	1 ⁵ / ₁₆
	15" x 15"	40	52	76	15 ⁷ / ₈	18 ⁵ / ₈	30 ¹ / ₄	37 ¹ / ₂	1 ¹ / ₄	1 ⁵ / ₁₆
110	18" x 18"	48	64	82	18 ⁷ / ₈	21 ⁷ / ₈	35 ¹ / ₄	47 ³ / ₈	1 ¹ / ₄	1 ⁵ / ₁₆
160	20" x 20"	48	64	92	24 ³ / ₄	24 ³ / ₄	39 ¹ / ₄	47 ³ / ₈	1 ¹ / ₄	1 ⁵ / ₁₆
	22" x 22"	48	64	92	27 ¹ / ₄	27 ¹ / ₄	39 ¹ / ₄	47 ³ / ₈	1 ¹ / ₄	1 ⁵ / ₁₆
Model	Blower Size	Dimensions								Filters Hood Qty - Size
		L	M	N	P	Q	R	S		
035	10" x 10"	14 ⁷ / ₁₆	8 ¹ / ₈	40 ¹ / ₁₆	25 ⁵ / ₈	27 ⁷ / ₁₆	7 ⁷ / ₈	16 ⁷ / ₁₆	2) 20" x 25"	
070	12" x 12"	18 ³ / ₁₆	9 ⁵ / ₁₆	50 ¹ / ₁₆	30 ⁵ / ₈	41 ¹³ / ₁₆	7 ⁷ / ₈	17 ³ / ₁₆	6) 16" x 20"	
	15" x 15"	16 ¹¹ / ₁₆	10 ¹¹ / ₁₆	50 ¹ / ₁₆	30 ⁵ / ₈	41 ¹³ / ₁₆	7 ⁷ / ₈	13 ⁵ / ₁₆		
110	18" x 18"	21 ¹ / ₁₆	12 ⁵ / ₁₆	62 ¹ / ₁₆	35 ⁵ / ₈	48 ⁷ / ₈	7 ⁷ / ₈	16 ¹¹ / ₁₆	6) 20" x 25"	
160	20" x 20"	19 ⁵ / ₈	13	62 ¹ / ₁₆	44 ⁷ / ₈	72 ³ / ₄	7 ⁷ / ₈	10 ¹ / ₄	9) 20" x 25"	
	22" x 22"	18 ³ / ₈	14 ¹ / ₁₆	62 ¹ / ₁₆	44 ⁷ / ₈	72 ³ / ₄	7 ⁷ / ₈	6 ¹ / ₂		

NOTE: All dimensions in inches subject to manufacturing tolerances.

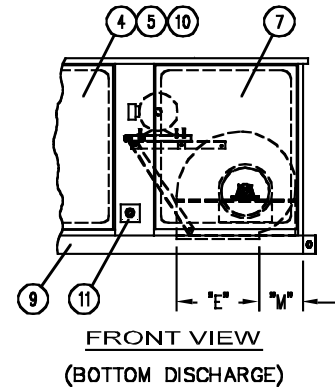
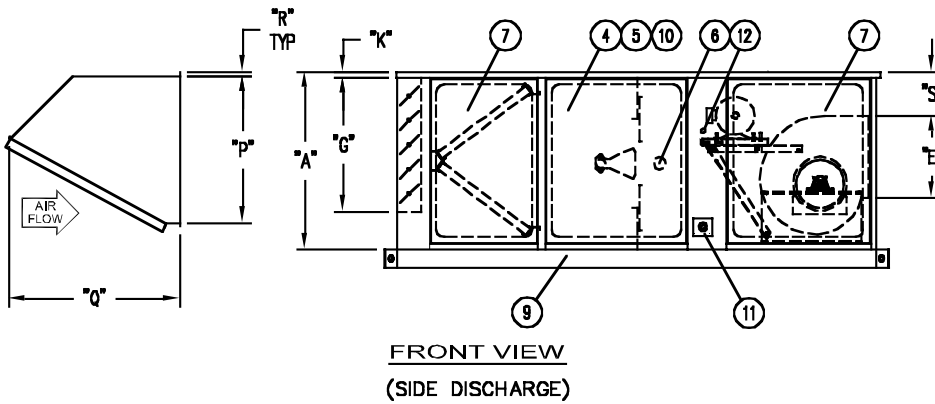
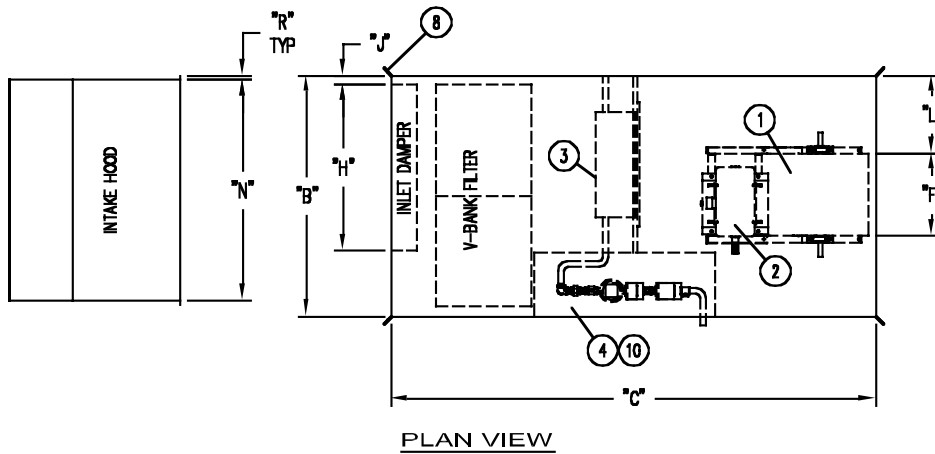
Dimensions

Horizontal Base Unit with V-Bank

C000505

UNIT COMPONENTS

- | | | | |
|---------------------------|---------------------------------------|----------------|---------------------------|
| 1. Centrifugal supply fan | 4. Control cabinet | 7. Access door | 10. Manifold compartment |
| 2. Fan motor | 5. Hinged control cabinet access door | 8. Lifting lug | 11. Gas connection |
| 3. Line burner | 6. Observation port | 9. Unit base | 12. Electrical connection |



RIGHT HAND SHOWN, LEFT HAND IS OPPOSITE

Model	Blower Size	Dimensions								
		A	B	C	E	F	G	H	J	K
035	10" x 10"	36	42	100	11 ³ / ₈	13 ¹ / ₈	25 ¹ / ₂	27	1 ¹ / ₄	1 ⁵ / ₁₆
070	12" x 12"	40	52	108	13 ⁷ / ₁₆	15 ⁵ / ₈	30 ¹ / ₄	37 ¹ / ₂	1 ¹ / ₄	1 ⁵ / ₁₆
	15" x 15"	40	52	108	15 ⁷ / ₈	18 ⁵ / ₈	30 ¹ / ₄	37 ¹ / ₂	1 ¹ / ₄	1 ⁵ / ₁₆
110	18" x 18"	48	64	114	18 ⁷ / ₈	21 ⁷ / ₈	35 ¹ / ₄	47 ³ / ₈	1 ¹ / ₄	1 ⁵ / ₁₆
160	20" x 20"	48	64	124	24 ³ / ₄	24 ³ / ₄	39 ¹ / ₄	47 ³ / ₈	1 ¹ / ₄	1 ⁵ / ₁₆
	22" x 22"	48	64	124	27 ¹ / ₄	27 ¹ / ₄	39 ¹ / ₄	47 ³ / ₈	1 ¹ / ₄	1 ⁵ / ₁₆

Model	Blower Size	Dimensions									
		L	M	N	P	Q	R	S	Filter Hood Qty - Size	Filter V-Bank Qty - Size	
035	10" x 10"	14 ⁷ / ₁₆	8 ¹ / ₈	40 ¹ / ₁₆	25 ⁵ / ₈	27 ⁷ / ₁₆	⁷ / ₈	16 ⁷ / ₁₆	2) 20" x 25"	4) 20" x 20"	
070	12" x 12"	18 ³ / ₁₆	9 ⁵ / ₁₆	50 ¹ / ₁₆	30 ⁵ / ₈	41 ¹³ / ₁₆	⁷ / ₈	17 ³ / ₁₆	6) 16" x 20"	6) 16" x 25"	
	15" x 15"	16 ¹¹ / ₁₆	10 ¹¹ / ₁₆	50 ¹ / ₁₆	30 ⁵ / ₈	41 ¹³ / ₁₆	⁷ / ₈	13 ⁵ / ₁₆			
110	18" x 18"	21 ¹ / ₁₆	12 ⁵ / ₁₆	62 ¹ / ₁₆	35 ⁵ / ₈	48 ⁷ / ₈	⁷ / ₈	16 ¹¹ / ₁₆	6) 20" x 25"	6) 20" x 25"	
160	20" x 20"	19 ⁵ / ₈	13	62 ¹ / ₁₆	44 ⁷ / ₈	72 ³ / ₄	⁷ / ₈	10 ¹ / ₄	9) 20" x 25"	12) 20" x 20"	
	22" x 22"	18 ³ / ₈	14 ¹ / ₁₆	62 ¹ / ₁₆	44 ⁷ / ₈	72 ³ / ₄	⁷ / ₈	6 ¹ / ₂			

NOTE: All dimensions in inches subject to manufacturing tolerances.

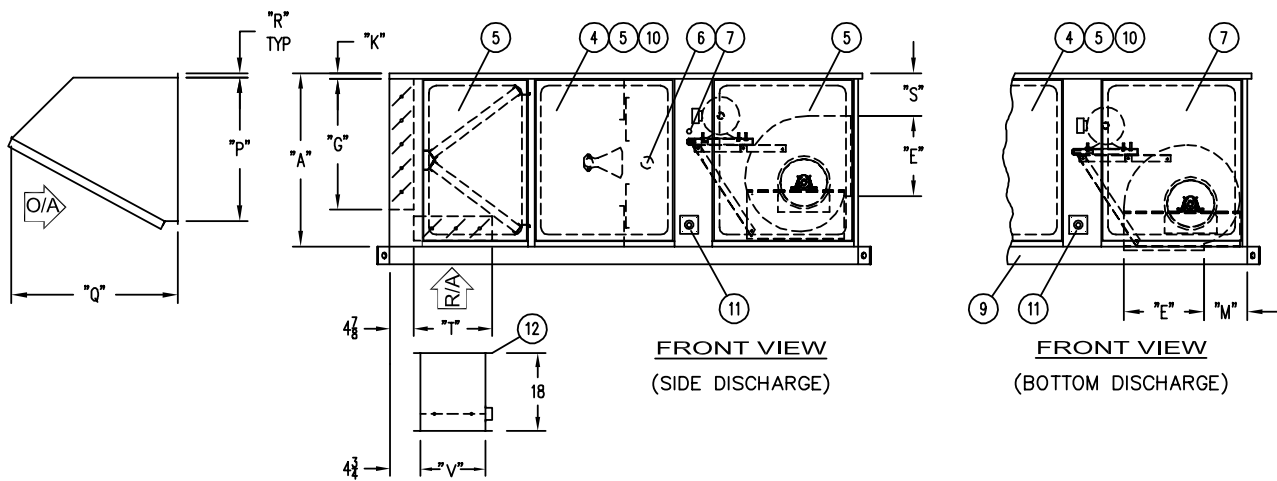
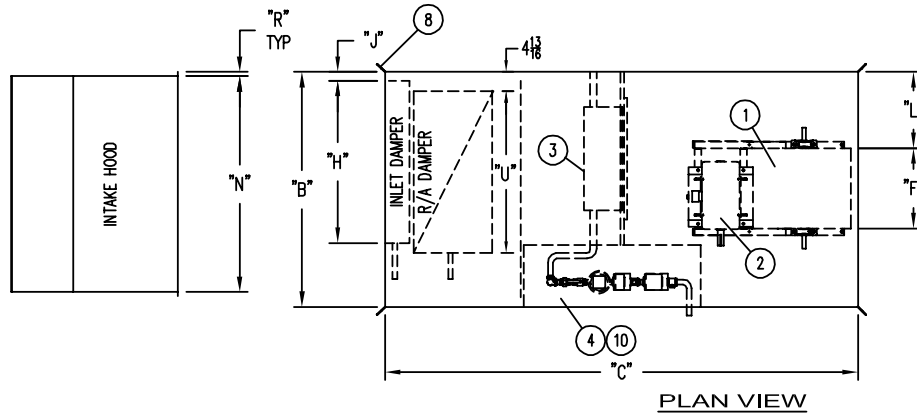
Dimensions

Horizontal Base Unit with V-Bank and Mixing Dampers

C000544

UNIT COMPONENTS

- | | | | |
|---------------------------|-----------------------|--------------------------|--------------------------|
| 1. Centrifugal supply fan | 4. Control cabinet | 7. Electrical connection | 10. Manifold compartment |
| 2. Fan motor | 5. Hinged access door | 8. Lifting lug | 11. Gas connection |
| 3. Line burner | 6. Observation port | 9. Unit base | 12. Airflow station |



RIGHT HAND SHOWN, LEFT HAND IS OPPOSITE

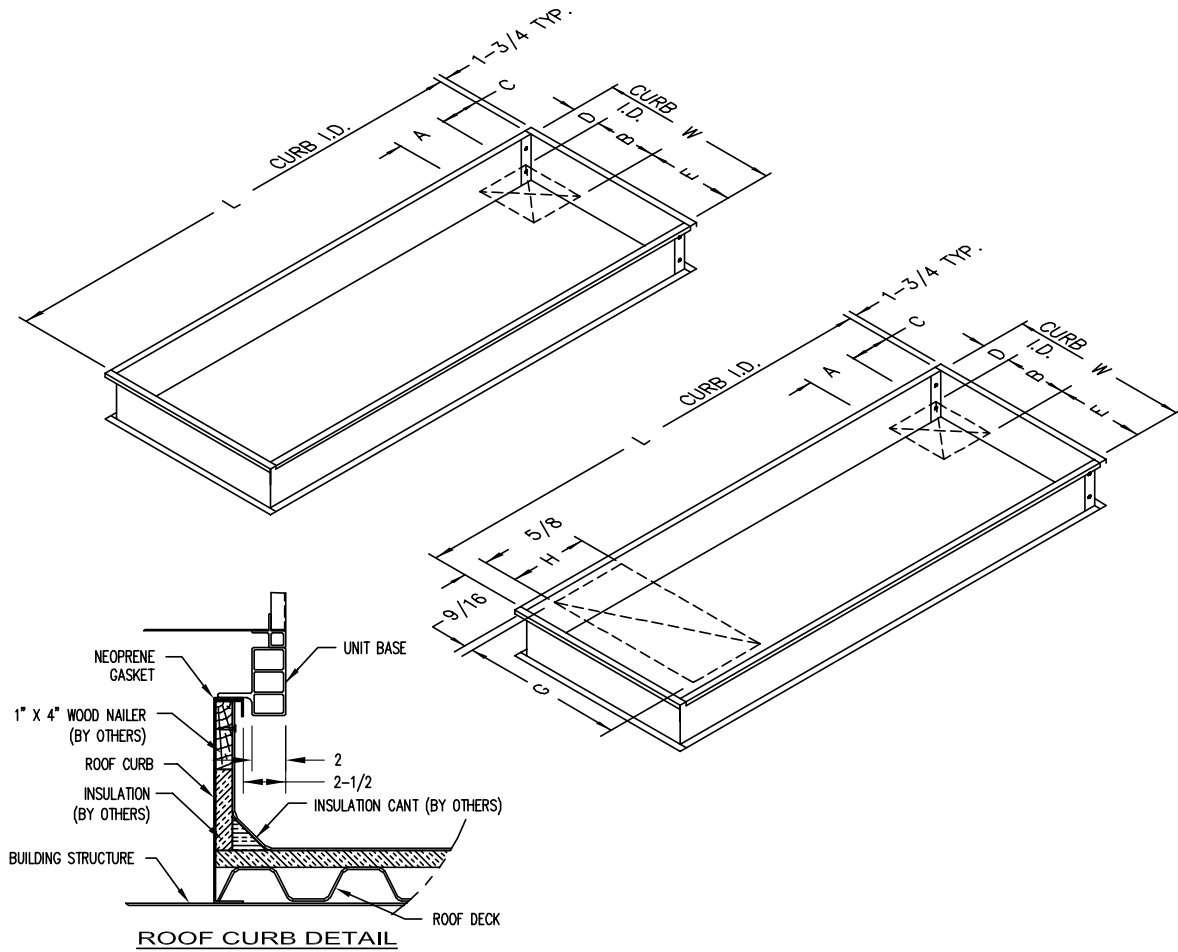
Model	Blower Size	Dimensions										
		A	B	C	E	F	G	H	J	K	L	M
035	10" x 10"	36	42	100	11 ³ / ₈	13 ¹ / ₈	25 ¹ / ₂	27	1 ¹ / ₄	1 ⁵ / ₁₆	14 ⁷ / ₁₆	8 ¹ / ₈
070	12" x 12"	40	52	108	13 ⁷ / ₁₆	15 ⁵ / ₈	30 ¹ / ₄	37 ¹ / ₂	1 ¹ / ₄	1 ⁵ / ₁₆	18 ³ / ₁₆	9 ⁵ / ₁₆
	15" x 15"	40	52	108	15 ⁷ / ₈	18 ⁵ / ₈	30 ¹ / ₄	37 ¹ / ₂	1 ¹ / ₄	1 ⁵ / ₁₆	16 ¹¹ / ₁₆	10 ¹¹ / ₁₆
110	18" x 18"	48	64	114	18 ⁷ / ₈	21 ⁷ / ₈	35 ¹ / ₄	47 ³ / ₈	1 ¹ / ₄	1 ⁵ / ₁₆	21 ¹ / ₁₆	12 ⁵ / ₁₆
160	20" x 20"	48	64	124	24 ³ / ₄	24 ³ / ₄	39 ¹ / ₄	47 ³ / ₈	1 ¹ / ₄	1 ⁵ / ₁₆	19 ⁵ / ₈	13
	22" x 22"	48	64	124	27 ¹ / ₄	27 ¹ / ₄	39 ¹ / ₄	47 ³ / ₈	1 ¹ / ₄	1 ⁵ / ₁₆	18 ³ / ₈	14 ¹ / ₁₆
Model	Blower Size	Dimensions										
		N	P	Q	R	S	T	U	V	W	Filter Hood Qty - Size	Filter V-Bank Qty - Size
035	10" x 10"	40 ¹ / ₁₆	25 ⁵ / ₈	27 ⁷ / ₁₆	7 ¹ / ₈	16 ⁷ / ₁₆	18 ⁷ / ₈	26 ⁷ / ₈	19	27	2) 20" x 25"	4) 20" x 20"
070	12" x 12"	50 ¹ / ₁₆	30 ⁵ / ₈	41 ¹³ / ₁₆	7 ¹ / ₈	17 ³ / ₁₆	18 ⁷ / ₈	37 ⁷ / ₈	19	38	6) 16" x 20"	6) 16" x 25"
	15" x 15"	50 ¹ / ₁₆	30 ⁵ / ₈	41 ¹³ / ₁₆	7 ¹ / ₈	13 ⁵ / ₁₆	18 ⁷ / ₈	37 ⁷ / ₈	19	38		
110	18" x 18"	62 ¹ / ₁₆	35 ⁵ / ₈	48 ⁷ / ₈	7 ¹ / ₈	16 ¹¹ / ₁₆	19 ⁷ / ₈	47 ⁷ / ₈	20	48	6) 20" x 25"	6) 20" x 25"
160	20" x 20"	62 ¹ / ₁₆	44 ⁷ / ₈	72 ³ / ₄	7 ¹ / ₈	10 ¹ / ₄	24 ⁷ / ₈	47 ⁷ / ₈	24 ⁷ / ₈	48	9) 20" x 25"	12) 20" x 20"
	22" x 22"	62 ¹ / ₁₆	44 ⁷ / ₈	72 ³ / ₄	7 ¹ / ₈	6 ¹ / ₂	24 ⁷ / ₈	47 ⁷ / ₈	24 ⁷ / ₈	48		

NOTE: All dimensions in inches subject to manufacturing tolerances.

Dimensions

Roof Curbs

C000507



Model	Blower Size	Dimensions							F ₁ Standard Height	F ₂ Optional Height
		A	B	C	D	E				
035	10" x 10"	11 ³ / ₈	13 ¹ / ₈	3 ⁷ / ₈	10 ³ / ₁₆	10 ³ / ₁₆			12	18
070	12" x 12"	13 ⁷ / ₁₆	15 ⁵ / ₈	5 ¹ / ₁₆	13 ¹⁵ / ₁₆	13 ¹⁵ / ₁₆			12	18
	15" x 15"	15 ⁷ / ₈	18 ⁵ / ₈	6 ⁷ / ₁₆	12 ⁷ / ₁₆	12 ⁷ / ₁₆				
110	18" x 18"	18 ⁷ / ₈	21 ⁷ / ₈	8 ¹ / ₁₆	16 ¹³ / ₁₆	16 ¹³ / ₁₆			12	18
160	20" x 20"	24 ³ / ₄	24 ³ / ₄	8 ³ / ₄	15 ³ / ₈	15 ³ / ₈			12	18
	22" x 22"	27 ¹ / ₄	27 ¹ / ₄	9 ¹³ / ₁₆	14 ¹ / ₈	14 ¹ / ₈				
Model	Blower Size	Dimensions								
		Base Unit Only		Base Unit w/V-Bank		Base Unit w/V-Bank & Return Air				
		L ₁	W ₁	L ₂	W ₂	G	H	L ₃	W ₃	
035	10" x 10"	59 ¹ / ₂	33 ¹ / ₂	91 ¹ / ₂	33 ¹ / ₂	26 ⁷ / ₈	18 ⁷ / ₈	91 ¹ / ₂	33 ¹ / ₂	
070	12" x 12"	67 ¹ / ₂	43 ¹ / ₂	99 ¹ / ₂	43 ¹ / ₂	37 ⁷ / ₈	18 ⁷ / ₈	99 ¹ / ₂	43 ¹ / ₂	
	15" x 15"									
110	18" x 18"	73 ¹ / ₂	55 ¹ / ₂	105 ¹ / ₂	55 ¹ / ₂	47 ⁷ / ₈	20 ⁷ / ₈	105 ¹ / ₂	55 ¹ / ₂	
160	20" x 20"	83 ¹ / ₂	55 ¹ / ₂	115 ¹ / ₂	55 ¹ / ₂	47 ⁷ / ₈	24 ⁷ / ₈	125 ¹ / ₂	55 ¹ / ₂	
	22" x 22"									

NOTE: All dimensions in inches subject to manufacturing tolerances.

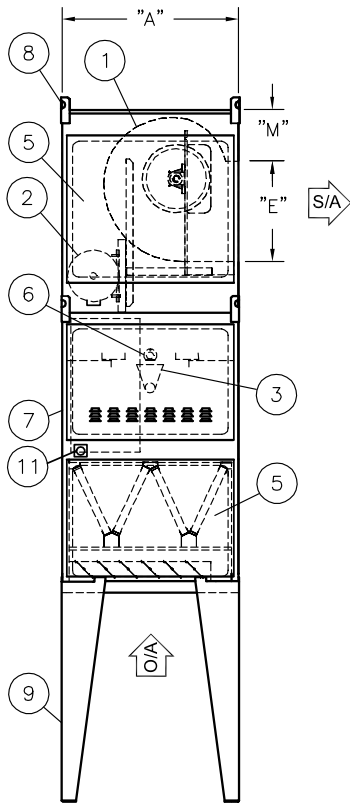
Dimensions

Vertical Base Unit with V-Bank

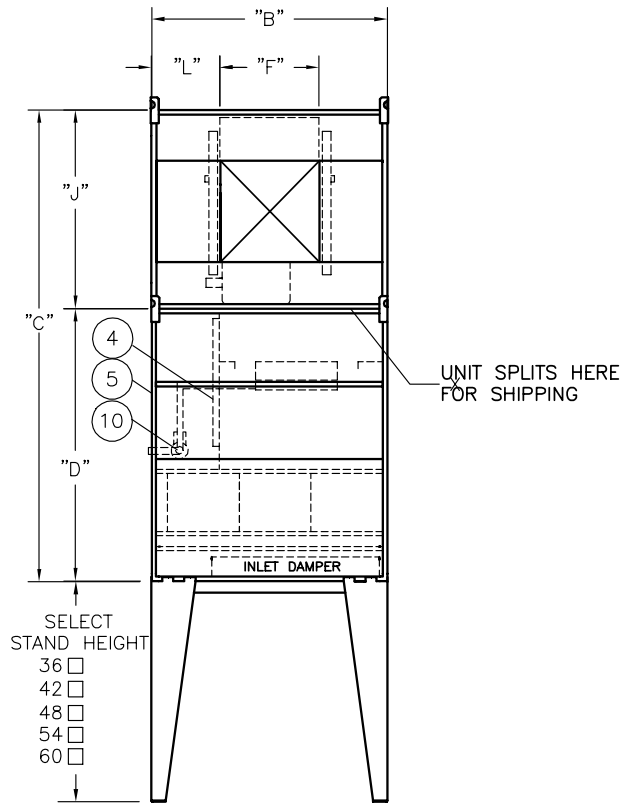
C000547

UNIT COMPONENTS

- | | | | |
|---------------------------|-----------------------|--------------------------|--------------------------|
| 1. Centrifugal supply fan | 4. Control cabinet | 7. Electrical connection | 10. Manifold compartment |
| 2. Fan motor | 5. Hinged access door | 8. Lifting lug | 11. Gas connection |
| 3. Line burner | 6. Observation port | 9. Support stand | |



FRONT VIEW



SIDE VIEW

RIGHT HAND SHOWN, LEFT HAND IS OPPOSITE

Model	Blower Size	Dimensions				
		A	B	C	D	E
035	10" x 10"	36	42	106	76	11 ³ / ₈
070	12" x 12"	40	52	124	84	13 ⁷ / ₁₆
	15" x 15"	40	52	124	84	15 ⁷ / ₈
110	18" x 18"	48	64	122	74	18 ⁷ / ₈
160	20" x 20"	48	64	128	74	24 ³ / ₄
	22" x 22"	48	64	128	74	27 ¹ / ₄
Model	Blower Size	Dimensions				
		F	J	L	M	Filters V-Bank Qty - Size
035	10" x 10"	13 ¹ / ₈	30	14 ⁷ / ₁₆	8 ¹ / ₈	4) 20" x 20"
070	12" x 12"	15 ⁵ / ₈	40	18 ³ / ₁₆	9 ⁵ / ₁₆	6) 16" x 25"
	15" x 15"	18 ⁵ / ₈	40	16 ¹¹ / ₁₆	10 ¹¹ / ₁₆	
110	18" x 18"	21 ⁷ / ₈	48	21 ¹ / ₁₆	12 ⁵ / ₁₆	6) 20" x 25"
160	20" x 20"	24 ³ / ₄	54	19 ⁵ / ₈	13	12) 20" x 20"
	22" x 22"	27 ¹ / ₄	54	18 ³ / ₈	17 ¹¹ / ₃₂	

NOTE: All dimensions in inches subject to manufacturing tolerances.

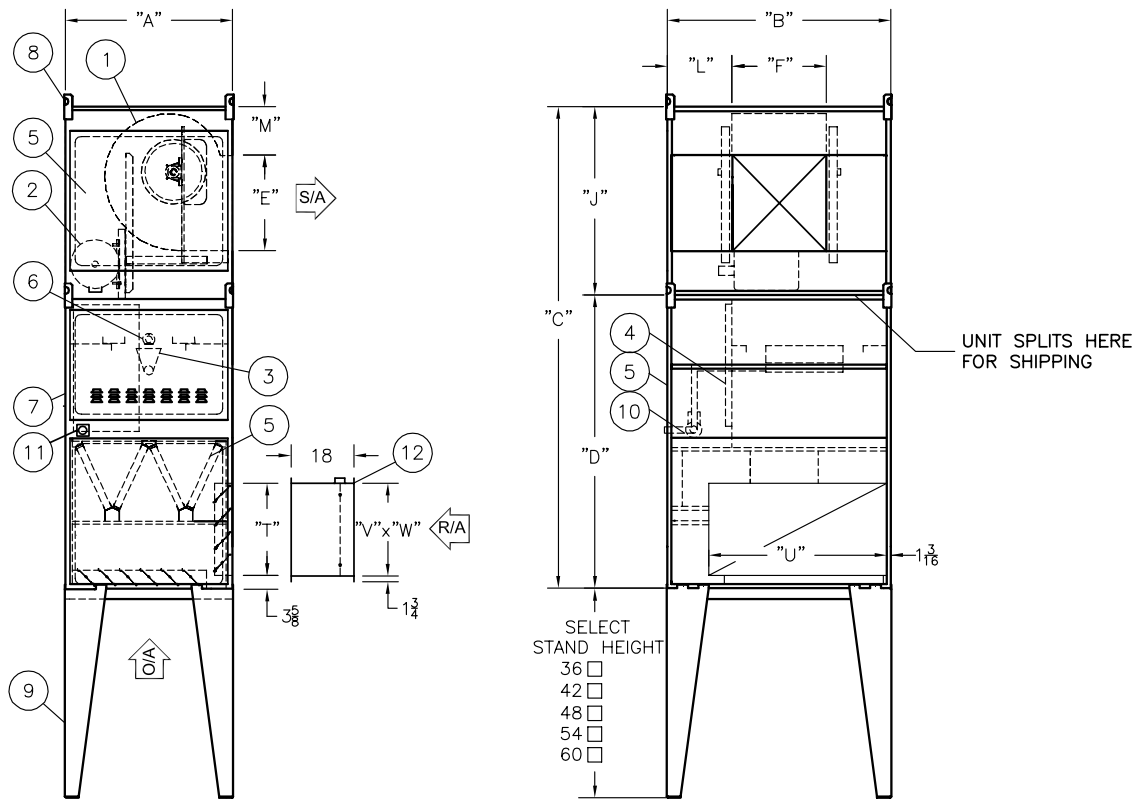
Dimensions

Vertical Base Unit with V-Bank and Mixing Dampers

C000548

UNIT COMPONENTS

- | | | | |
|---------------------------|-----------------------|--------------------------|--------------------------|
| 1. Centrifugal supply fan | 4. Control cabinet | 7. Electrical connection | 10. Manifold compartment |
| 2. Fan motor | 5. Hinged access door | 8. Lifting lug | 11. Gas connection |
| 3. Line burner | 6. Observation port | 9. Support stand | 12. Airflow station |



FRONT VIEW

SIDE VIEW

RIGHT HAND SHOWN, LEFT HAND IS OPPOSITE

Model	Blower Size	Dimensions						
		A	B	C	D	E	F	J
035	10" x 10"	36	42	106	76	11 ³ / ₈	13 ¹ / ₈	30
070	12" x 12"	40	52	124	84	13 ⁷ / ₁₆	15 ⁵ / ₈	40
	15" x 15"	40	52	124	84	15 ⁷ / ₈	18 ⁵ / ₈	40
110	18" x 18"	48	64	132	84	18 ⁷ / ₈	21 ⁷ / ₈	48
160	20" x 20"	48	64	138	84	24 ³ / ₄	24 ³ / ₄	54
	22" x 22"	48	64	138	84	27 ¹ / ₄	27 ¹ / ₄	54

Model	Blower Size	Dimensions						
		L	M	T	U	V	W	Filters V-Bank Qty - Size
035	10" x 10"	14 ⁷ / ₁₆	8 ¹ / ₈	20 ¹ / ₂	28 ¹ / ₂	19	27	4) 20" x 20"
070	12" x 12"	18 ³ / ₁₆	9 ⁵ / ₁₆	20 ¹ / ₂	39 ¹ / ₂	19	27	6) 16" x 25"
	15" x 15"	16 ¹¹ / ₁₆	10 ¹¹ / ₁₆	20 ¹ / ₂	39 ¹ / ₂	19	27	
110	18" x 18"	21 ¹ / ₁₆	12 ⁵ / ₁₆	21 ¹ / ₂	49 ¹ / ₂	20	48	6) 20" x 25"
160	20" x 20"	19 ⁵ / ₈	13	26 ¹ / ₂	49 ¹ / ₂	24 ⁷ / ₈	48	12) 20" x 20"
	22" x 22"	18 ³ / ₈	17 ¹¹ / ₃₂	16 ¹ / ₂	49 ¹ / ₂	24 ⁷ / ₈	48	

NOTE: All dimensions in inches subject to manufacturing tolerances.