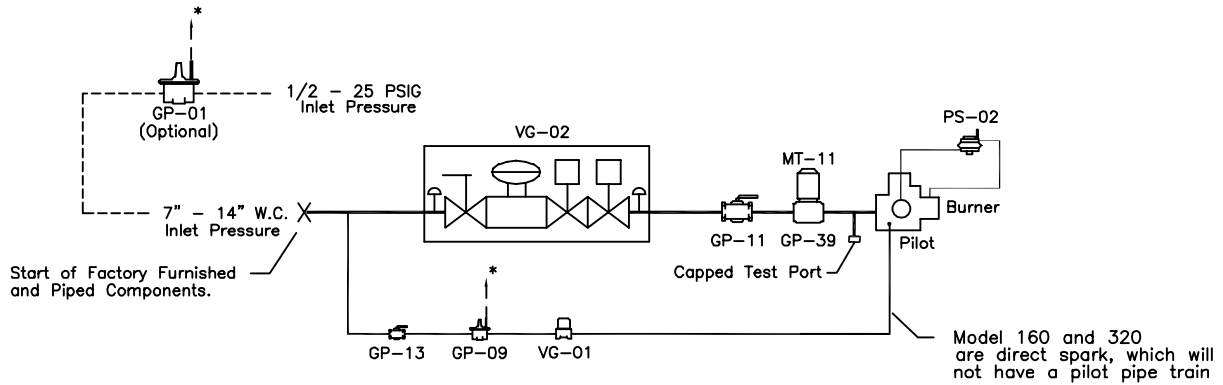


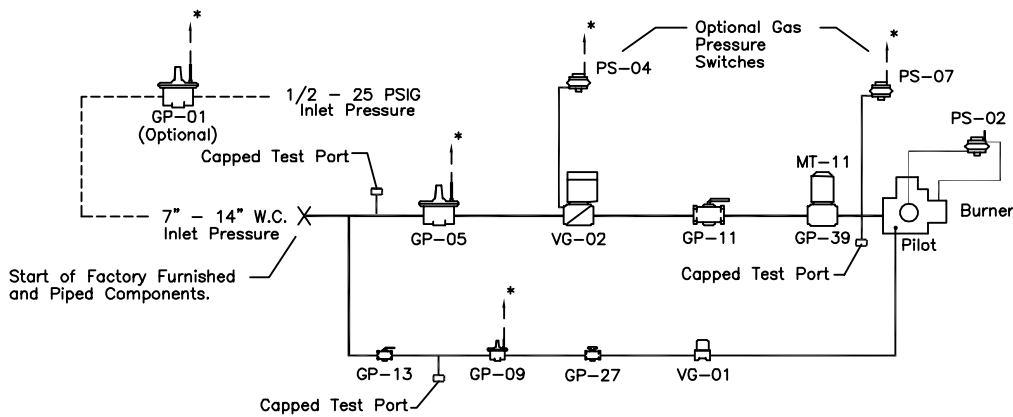
# Gas Piping Layout

## Schematic Component Diagrams

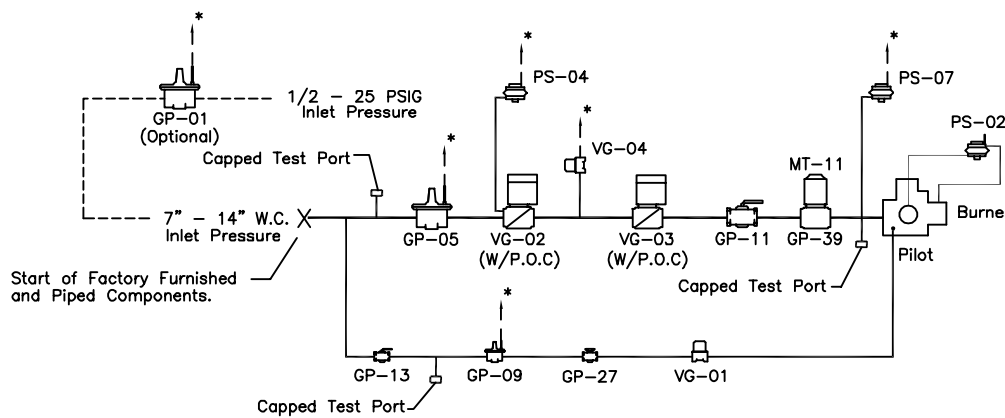
C00058



STANDARD & FM & IRI SIZES 160 UP TO 480



STANDARD & FM & IRI SIZES 800 & 1120



"BLOCK & BLEED" OPTION FOR SIZES 800 & 1120

### COMPONENT IDENTIFICATION

GP-01 HIGH GAS PRESSURE REGULATOR (OPTIONAL)  
 GP-05 MAIN GAS PRESSURE REGULATOR  
 GP-09 PILOT GAS PRESSURE REGULATOR  
 GP-11 FIRING VALVE  
 GP-13 PILOT FIRING VALVE  
 GP-27 NEEDLE ORIFICE VALVE  
 GP-39 BUTTERFLY VALVE  
 MT-11 MODULATING VALVE MOTOR

VG-01 PILOT GAS VALVE  
 VG-02 MAIN GAS VALVE  
 VG-03 AUXILIARY GAS VALVE  
 VG-04 N/O VENT VALVE  
 PS-02 BURNER AIR FLOW SWITCH  
 PS-04 LOW GAS PRESSURE SWITCH  
 PS-07 HIGH GAS PRESSURE SWITCH

### NOTES:

- \* 1. Vent limiting devices provided wherever possible, when venting is required the venting to outside is by others on indoor units and furnished by factory on outdoor units.
2. For inlet pressures under 7" W.C. please consult factory.