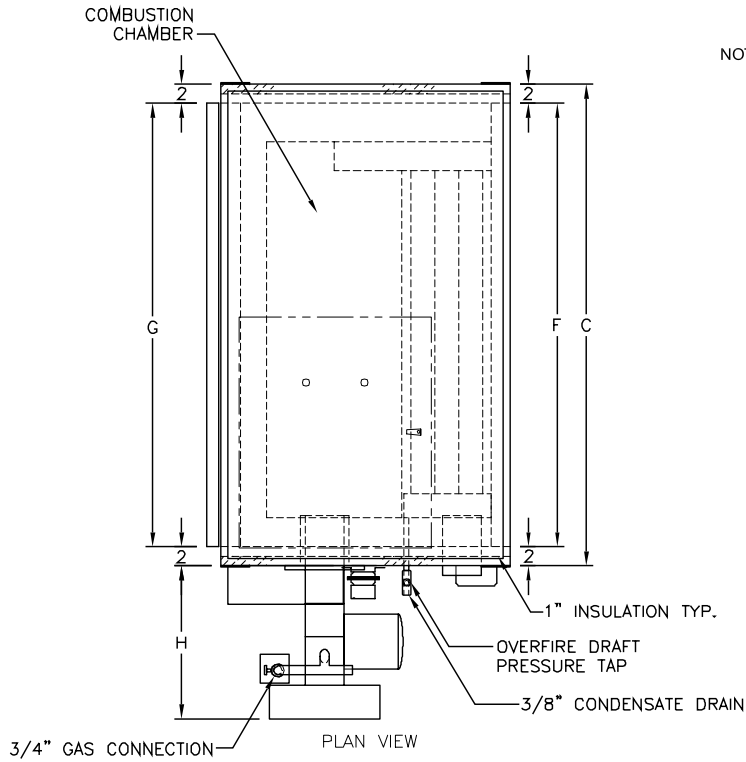


# Dimensions

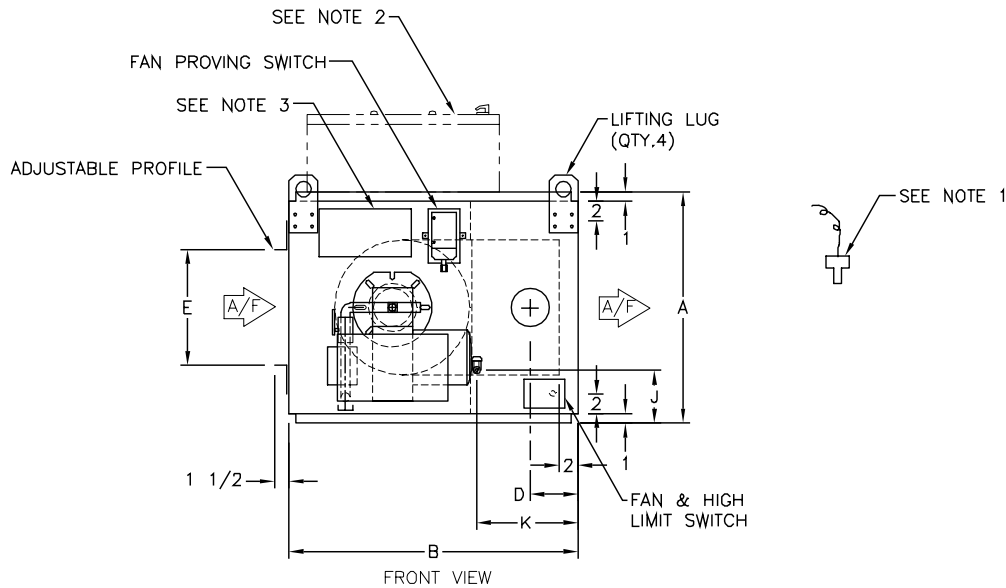
## Models GTD Duct Furnaces

C000554



NOTE:

1. MOUNT DISCHARGE SENSOR IN SUPPLY AIR DUCT A MINIMUM OF 36" FROM UNIT (BY OTHERS).
2. CONTROL CABINET SHIPPED TEMPORARILY MOUNTED TO UNIT.
3. JUNCTION BOX WITH 10 FOOT WIRE HARNESS TO CONTROL CABINET.



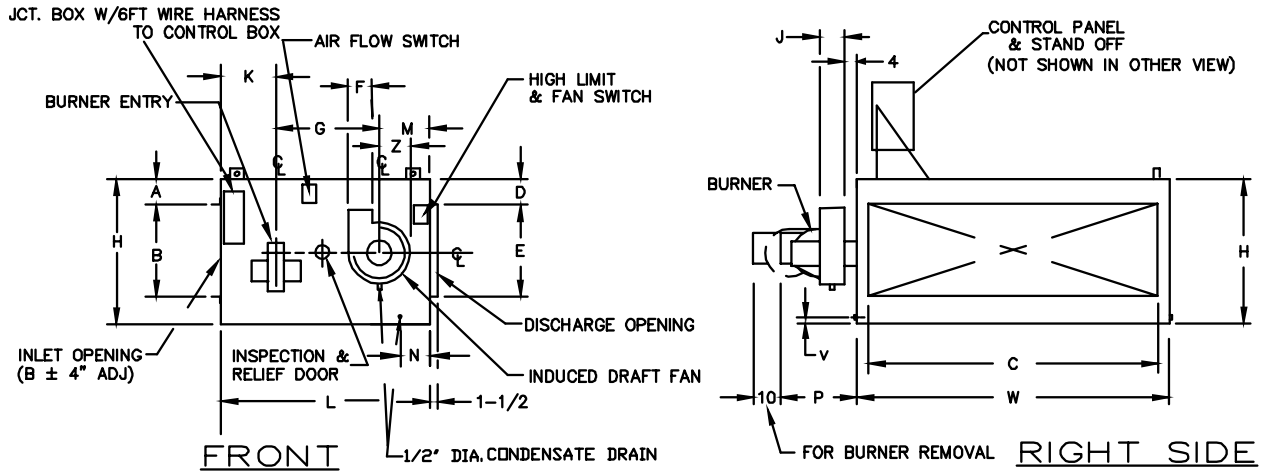
| GTD Model | Approximate Weight | Dimensions |     |     |                                |                                |     |     |     |                                 |                                |                                 |
|-----------|--------------------|------------|-----|-----|--------------------------------|--------------------------------|-----|-----|-----|---------------------------------|--------------------------------|---------------------------------|
|           |                    | "A"        | "B" | "C" | "D"                            | "E"                            | "F" | "G" | "H" | "J"                             | "K"                            |                                 |
| 160       | 508                | 24         | 30  | 50  | 5                              | 10                             | ±4  | 46  | 46  | 15 <sup>7</sup> / <sub>8</sub>  | 5 <sup>1</sup> / <sub>2</sub>  | 10 <sup>9</sup> / <sub>16</sub> |
| 320       | 685                | 30         | 40  | 58  | 9                              | 12 <sup>1</sup> / <sub>2</sub> | ±4  | 54  | 54  | 15 <sup>7</sup> / <sub>8</sub>  | 6 <sup>7</sup> / <sub>16</sub> | 15 <sup>9</sup> / <sub>16</sub> |
| 480       | 837                | 32         | 42  | 74  | 9                              | 15                             | ±4  | 70  | 70  | 15 <sup>7</sup> / <sub>8</sub>  | 7                              | 15 <sup>9</sup> / <sub>16</sub> |
| 800       | 1237               | 41         | 49  | 83  | 10 <sup>1</sup> / <sub>4</sub> | 19                             | ±4  | 79  | 79  | 20                              | 7 <sup>1</sup> / <sub>16</sub> | 17 <sup>1</sup> / <sub>16</sub> |
| 1120      | 1713               | 51         | 59  | 86  | 10                             | 28                             | ±14 | 82  | 82  | 24 <sup>9</sup> / <sub>16</sub> | 8 <sup>7</sup> / <sub>8</sub>  | 17 <sup>9</sup> / <sub>16</sub> |

NOTE: All dimensions in inches subject to manufacturing tolerances.

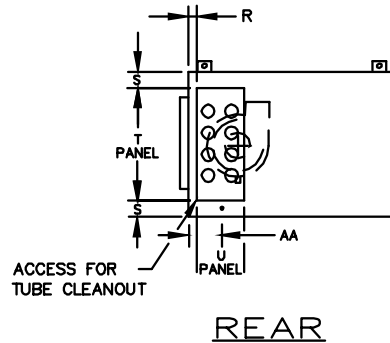
# Dimensions

## Model GTDM Duct Furnaces

P000898A



ALTERNATE POSITION  
INDUCED DRAFT FAN



REAR

### SELECTION PROCEDURE

1. Given: CFM and temperature rise or heat output
2. Go to pressure drop charts (page 20-28) and select cabinet based on CFM
3. If temperature rise is given, calculate required heat output using this formula:  

$$MBH = CFM \times \text{Temperature Rise} \times 1.08 / 1000$$
4. Select heat exchanger model capable of providing the required heat output.

### Example:

Require 6900 CFM and a 50°F temperature rise

From pressure drop chart on page 21, select cabinet size 55 with a 0.42" pressure drop

Calculate MBH:  $6900 \times 50 \times 1.08 / 1000 = 372.6$  MBH

Select size 40 heater

Proper Model is GTDM55/40

# Dimensions

| Model GTDM Duct Furnaces |                    |                                |                                |                               |                                |                                |                                |                                |     |                                |                                |                                |                                |
|--------------------------|--------------------|--------------------------------|--------------------------------|-------------------------------|--------------------------------|--------------------------------|--------------------------------|--------------------------------|-----|--------------------------------|--------------------------------|--------------------------------|--------------------------------|
| Model                    | Approximate Weight | Dimensions                     |                                |                               |                                |                                |                                |                                |     |                                |                                |                                |                                |
|                          |                    | "A"                            | "B"                            | "C"                           | "D"                            | "E"                            | "F"                            | "G"                            | "H" | "J"                            | "K"                            | "L"                            | "M"                            |
| 25, 35 or 40             | 1025               | 11 <sup>1</sup> / <sub>2</sub> | 9                              | 44                            | 7                              | 18                             | 6 <sup>1</sup> / <sub>4</sub>  | 24                             | 32  | 6 <sup>3</sup> / <sub>8</sub>  | 13                             | 47                             | 10                             |
| 55/25, 35 or 40          | 1100               | 12 <sup>1</sup> / <sub>2</sub> | 11                             | 56                            | 9                              | 18                             | 6 <sup>1</sup> / <sub>4</sub>  | 24                             | 36  | 6 <sup>3</sup> / <sub>8</sub>  | 13                             | 47                             | 10                             |
| 75/25, 35 or 40          | 1220               | 12 <sup>3</sup> / <sub>4</sub> | 10 <sup>1</sup> / <sub>2</sub> | 76                            | 9                              | 18                             | 6 <sup>1</sup> / <sub>4</sub>  | 24                             | 36  | 6 <sup>3</sup> / <sub>8</sub>  | 13                             | 47                             | 10                             |
| 45 or 55                 | 1280               | 12 <sup>1</sup> / <sub>2</sub> | 11                             | 56                            | 9                              | 18                             | 6 <sup>1</sup> / <sub>4</sub>  | 28                             | 36  | 6 <sup>3</sup> / <sub>8</sub>  | 15                             | 55                             | 12                             |
| 75/45 or 55              | 1355               | 12 <sup>3</sup> / <sub>4</sub> | 10 <sup>1</sup> / <sub>2</sub> | 76                            | 9                              | 18                             | 6 <sup>1</sup> / <sub>4</sub>  | 28                             | 36  | 6 <sup>3</sup> / <sub>8</sub>  | 15                             | 55                             | 12                             |
| 100/45 or 55             | 1688               | 17                             | 14                             | 86                            | 15                             | 18                             | 6 <sup>1</sup> / <sub>4</sub>  | 28                             | 48  | 6 <sup>3</sup> / <sub>8</sub>  | 15                             | 55                             | 12                             |
| 65 or 75                 | 1600               | 12 <sup>3</sup> / <sub>4</sub> | 10 <sup>1</sup> / <sub>2</sub> | 76                            | 9                              | 18                             | 7                              | 28                             | 36  | 7 <sup>3</sup> / <sub>8</sub>  | 15                             | 55                             | 12                             |
| 100/65 or 75             | 1833               | 17                             | 14                             | 86                            | 15                             | 18                             | 7                              | 28                             | 48  | 7 <sup>3</sup> / <sub>8</sub>  | 15                             | 55                             | 12                             |
| 85 or 100                | 2250               | 17                             | 14                             | 86                            | 15                             | 18                             | 7                              | 32                             | 48  | 7 <sup>3</sup> / <sub>8</sub>  | 24                             | 68                             | 12                             |
| 175/85 or 100            | 2475               | 19                             | 16                             | 96                            | 15                             | 24                             | 7                              | 32                             | 54  | 7 <sup>3</sup> / <sub>8</sub>  | 24                             | 68                             | 12                             |
| 125, 150 or 175          | 3180               | 19                             | 16                             | 96                            | 15                             | 24                             | 9                              | 37                             | 54  | 9 <sup>3</sup> / <sub>8</sub>  | 22 <sup>1</sup> / <sub>2</sub> | 72                             | 12 <sup>1</sup> / <sub>2</sub> |
| 250/125, 150 or 175      | 3230               | 19 <sup>1</sup> / <sub>2</sub> | 21                             | 116                           | 15                             | 30                             | 9                              | 37                             | 60  | 9 <sup>3</sup> / <sub>8</sub>  | 22 <sup>1</sup> / <sub>2</sub> | 72                             | 12 <sup>1</sup> / <sub>2</sub> |
| 200                      | 4225               | 20 <sup>1</sup> / <sub>2</sub> | 19                             | 116                           | 15                             | 30                             | 9                              | 37                             | 60  | 9 <sup>3</sup> / <sub>8</sub>  | 22 <sup>1</sup> / <sub>2</sub> | 72                             | 12 <sup>1</sup> / <sub>2</sub> |
| 300/200                  | 4171               | 22                             | 21                             | 136                           | 17 <sup>1</sup> / <sub>2</sub> | 30                             | 9                              | 37                             | 65  | 9 <sup>3</sup> / <sub>8</sub>  | 22 <sup>1</sup> / <sub>2</sub> | 72                             | 12 <sup>1</sup> / <sub>2</sub> |
| 400/200                  | 5444               | 24 <sup>1</sup> / <sub>2</sub> | 21                             | 154                           | 20                             | 30                             | 9                              | 37                             | 70  | 9 <sup>3</sup> / <sub>8</sub>  | 22 <sup>1</sup> / <sub>2</sub> | 72                             | 12 <sup>1</sup> / <sub>2</sub> |
| 250                      | 4400               | 19 <sup>1</sup> / <sub>2</sub> | 21                             | 116                           | 15                             | 30                             | 10 <sup>5</sup> / <sub>8</sub> | 37                             | 60  | 11 <sup>1</sup> / <sub>8</sub> | 22 <sup>1</sup> / <sub>2</sub> | 72                             | 12 <sup>1</sup> / <sub>2</sub> |
| 300/250                  | 4537               | 22                             | 21                             | 136                           | 17 <sup>1</sup> / <sub>2</sub> | 30                             | 10 <sup>5</sup> / <sub>8</sub> | 37                             | 65  | 11 <sup>1</sup> / <sub>8</sub> | 22 <sup>1</sup> / <sub>2</sub> | 72                             | 12 <sup>1</sup> / <sub>2</sub> |
| 400/250                  | 5716               | 24 <sup>1</sup> / <sub>2</sub> | 21                             | 154                           | 20                             | 30                             | 10 <sup>5</sup> / <sub>8</sub> | 37                             | 70  | 11 <sup>1</sup> / <sub>8</sub> | 22 <sup>1</sup> / <sub>2</sub> | 72                             | 12 <sup>1</sup> / <sub>2</sub> |
| 275 or 300               | 5500               | 22                             | 21                             | 136                           | 17 <sup>1</sup> / <sub>2</sub> | 30                             | 10 <sup>5</sup> / <sub>8</sub> | 43                             | 65  | 11 <sup>1</sup> / <sub>8</sub> | 27                             | 84                             | 14                             |
| 400/275 or 300           | 6002               | 24 <sup>1</sup> / <sub>2</sub> | 21                             | 154                           | 20                             | 30                             | 10 <sup>5</sup> / <sub>8</sub> | 43                             | 70  | 11 <sup>1</sup> / <sub>8</sub> | 27                             | 84                             | 14                             |
| 600/275 or 300           | 6423               | 28 <sup>1</sup> / <sub>2</sub> | 23                             | 174                           | 16                             | 48                             | 10 <sup>5</sup> / <sub>8</sub> | 43                             | 80  | 11 <sup>1</sup> / <sub>8</sub> | 27                             | 84                             | 14                             |
| 325, 350 or 400          | 6600               | 24 <sup>1</sup> / <sub>2</sub> | 21                             | 154                           | 20                             | 30                             | 10 <sup>5</sup> / <sub>8</sub> | 57 <sup>1</sup> / <sub>4</sub> | 70  | 11 <sup>1</sup> / <sub>8</sub> | 31 <sup>1</sup> / <sub>4</sub> | 100                            | 11 <sup>1</sup> / <sub>2</sub> |
| 600/325, 350 or 400      | 6851               | 28 <sup>1</sup> / <sub>2</sub> | 23                             | 174                           | 16                             | 48                             | 10 <sup>5</sup> / <sub>8</sub> | 57 <sup>1</sup> / <sub>4</sub> | 80  | 11 <sup>1</sup> / <sub>8</sub> | 31 <sup>1</sup> / <sub>4</sub> | 100                            | 11 <sup>1</sup> / <sub>2</sub> |
| 500, 550 or 600          | 8871               | 28 <sup>1</sup> / <sub>2</sub> | 23                             | 174                           | 16                             | 48                             | 10 <sup>5</sup> / <sub>8</sub> | 79 <sup>3</sup> / <sub>4</sub> | 80  | 11 <sup>1</sup> / <sub>8</sub> | 46 <sup>1</sup> / <sub>4</sub> | 141                            | 15                             |
| Model                    | Approximate Weight | Dimensions                     |                                |                               |                                |                                |                                |                                |     |                                |                                |                                |                                |
|                          |                    | "N"                            | "P"                            | "R"                           | "S"                            | "T"                            | "U"                            | "V"                            | "W" | "X"                            | "Y"                            | "Z"                            | "AA"                           |
| 25, 35 or 40             | 1025               | 19 <sup>1</sup> / <sub>4</sub> | 17                             | 2                             | 2                              | 28                             | 16                             | 4                              | 48  | 6 <sup>5</sup> / <sub>8</sub>  | 9                              | 8 <sup>1</sup> / <sub>4</sub>  | 20 <sup>1</sup> / <sub>4</sub> |
| 55/25, 35 or 40          | 1100               | 19 <sup>1</sup> / <sub>4</sub> | 17                             | 2                             | 4                              | 28                             | 16                             | 6                              | 60  | 8 <sup>5</sup> / <sub>8</sub>  | 9                              | 8 <sup>1</sup> / <sub>4</sub>  | 20 <sup>1</sup> / <sub>4</sub> |
| 75/25, 35 or 40          | 1220               | 19 <sup>1</sup> / <sub>4</sub> | 17                             | 2                             | 4                              | 28                             | 16                             | 6                              | 80  | 8 <sup>5</sup> / <sub>8</sub>  | 9                              | 8 <sup>1</sup> / <sub>4</sub>  | 20 <sup>1</sup> / <sub>4</sub> |
| 45 or 55                 | 1280               | 21 <sup>1</sup> / <sub>4</sub> | 17                             | 2                             | 4                              | 28                             | 16                             | 5 <sup>1</sup> / <sub>8</sub>  | 60  | 8 <sup>5</sup> / <sub>8</sub>  | 9                              | 8 <sup>1</sup> / <sub>4</sub>  | 20 <sup>1</sup> / <sub>4</sub> |
| 75/45 or 55              | 1355               | 21 <sup>1</sup> / <sub>4</sub> | 17                             | 2                             | 4                              | 28                             | 16                             | 5 <sup>1</sup> / <sub>8</sub>  | 80  | 8 <sup>5</sup> / <sub>8</sub>  | 9                              | 8 <sup>1</sup> / <sub>4</sub>  | 20 <sup>1</sup> / <sub>4</sub> |
| 100/45 or 55             | 1688               | 21 <sup>1</sup> / <sub>4</sub> | 17                             | 2                             | 10                             | 28                             | 16                             | 11 <sup>1</sup> / <sub>8</sub> | 90  | 14 <sup>5</sup> / <sub>8</sub> | 9                              | 8 <sup>1</sup> / <sub>4</sub>  | 20 <sup>1</sup> / <sub>4</sub> |
| 65 or 75                 | 1600               | 21 <sup>1</sup> / <sub>4</sub> | 17                             | 3 <sup>1</sup> / <sub>4</sub> | 4                              | 28                             | 16                             | 5 <sup>1</sup> / <sub>8</sub>  | 80  | 7 <sup>1</sup> / <sub>4</sub>  | 10 <sup>1</sup> / <sub>2</sub> | 9 <sup>1</sup> / <sub>2</sub>  | 22 <sup>1</sup> / <sub>4</sub> |
| 100/65 or 75             | 1833               | 21 <sup>1</sup> / <sub>4</sub> | 17                             | 3 <sup>1</sup> / <sub>4</sub> | 10                             | 28                             | 16                             | 11 <sup>1</sup> / <sub>8</sub> | 90  | 13 <sup>1</sup> / <sub>4</sub> | 10 <sup>1</sup> / <sub>2</sub> | 9 <sup>1</sup> / <sub>2</sub>  | 22 <sup>1</sup> / <sub>4</sub> |
| 85 or 100                | 2250               | 20 <sup>3</sup> / <sub>4</sub> | 17                             | 3 <sup>1</sup> / <sub>2</sub> | 5 <sup>1</sup> / <sub>4</sub>  | 37 <sup>1</sup> / <sub>2</sub> | 16                             | 6 <sup>7</sup> / <sub>8</sub>  | 90  | 13 <sup>1</sup> / <sub>4</sub> | 10 <sup>1</sup> / <sub>2</sub> | 9 <sup>1</sup> / <sub>2</sub>  | 21 <sup>3</sup> / <sub>4</sub> |
| 175/85 or 100            | 2475               | 20 <sup>3</sup> / <sub>4</sub> | 17                             | 3 <sup>1</sup> / <sub>2</sub> | 8 <sup>1</sup> / <sub>4</sub>  | 37 <sup>1</sup> / <sub>2</sub> | 16                             | 11 <sup>1</sup> / <sub>8</sub> | 100 | 16 <sup>1</sup> / <sub>4</sub> | 10 <sup>1</sup> / <sub>2</sub> | 9 <sup>1</sup> / <sub>2</sub>  | 22 <sup>1</sup> / <sub>4</sub> |
| 125, 150 or 175          | 3180               | 22 <sup>3</sup> / <sub>4</sub> | 21                             | 3 <sup>1</sup> / <sub>2</sub> | 5                              | 44                             | 16                             | 5 <sup>1</sup> / <sub>2</sub>  | 100 | 13 <sup>1</sup> / <sub>4</sub> | 13 <sup>1</sup> / <sub>2</sub> | 13                             | 21 <sup>3</sup> / <sub>4</sub> |
| 250/125, 150 or 175      | 3230               | 22 <sup>3</sup> / <sub>4</sub> | 21                             | 3 <sup>1</sup> / <sub>2</sub> | 8                              | 44                             | 16                             | 9 <sup>7</sup> / <sub>8</sub>  | 120 | 16 <sup>1</sup> / <sub>4</sub> | 13 <sup>1</sup> / <sub>2</sub> | 13                             | 21 <sup>3</sup> / <sub>4</sub> |
| 200                      | 4225               | 22 <sup>3</sup> / <sub>4</sub> | 21                             | 2 <sup>3</sup> / <sub>8</sub> | 7 <sup>3</sup> / <sub>8</sub>  | 45 <sup>1</sup> / <sub>4</sub> | 21 <sup>1</sup> / <sub>4</sub> | 6 <sup>1</sup> / <sub>2</sub>  | 120 | 16 <sup>1</sup> / <sub>4</sub> | 13 <sup>1</sup> / <sub>2</sub> | 13                             | 25 <sup>3</sup> / <sub>4</sub> |
| 300/200                  | 4171               | 22 <sup>3</sup> / <sub>4</sub> | 21                             | 2 <sup>3</sup> / <sub>8</sub> | 9 <sup>7</sup> / <sub>8</sub>  | 45 <sup>1</sup> / <sub>4</sub> | 21 <sup>1</sup> / <sub>4</sub> | 8 <sup>1</sup> / <sub>2</sub>  | 140 | 16 <sup>3</sup> / <sub>8</sub> | 13 <sup>1</sup> / <sub>2</sub> | 13                             | 25 <sup>3</sup> / <sub>4</sub> |
| 400/200                  | 5444               | 22 <sup>3</sup> / <sub>4</sub> | 21                             | 2 <sup>3</sup> / <sub>8</sub> | 12 <sup>3</sup> / <sub>8</sub> | 45 <sup>1</sup> / <sub>4</sub> | 21 <sup>1</sup> / <sub>4</sub> | 9                              | 160 | 18 <sup>7</sup> / <sub>8</sub> | 13 <sup>1</sup> / <sub>2</sub> | 13                             | 25 <sup>3</sup> / <sub>4</sub> |
| 250                      | 4400               | 22 <sup>3</sup> / <sub>4</sub> | 26                             | 2 <sup>3</sup> / <sub>8</sub> | 7 <sup>3</sup> / <sub>8</sub>  | 45 <sup>1</sup> / <sub>4</sub> | 21 <sup>1</sup> / <sub>4</sub> | 6 <sup>1</sup> / <sub>2</sub>  | 120 | 13 <sup>7</sup> / <sub>8</sub> | 15 <sup>1</sup> / <sub>2</sub> | 14 <sup>1</sup> / <sub>4</sub> | 25 <sup>3</sup> / <sub>4</sub> |
| 300/250                  | 4537               | 22 <sup>3</sup> / <sub>4</sub> | 26                             | 2 <sup>3</sup> / <sub>8</sub> | 9 <sup>7</sup> / <sub>8</sub>  | 45 <sup>1</sup> / <sub>4</sub> | 21 <sup>1</sup> / <sub>4</sub> | 8 <sup>1</sup> / <sub>2</sub>  | 140 | 16 <sup>3</sup> / <sub>8</sub> | 15 <sup>1</sup> / <sub>2</sub> | 14 <sup>1</sup> / <sub>4</sub> | 33 <sup>1</sup> / <sub>4</sub> |
| 400/250                  | 5716               | 22 <sup>3</sup> / <sub>4</sub> | 26                             | 2 <sup>3</sup> / <sub>8</sub> | 12 <sup>3</sup> / <sub>8</sub> | 45 <sup>1</sup> / <sub>4</sub> | 21 <sup>1</sup> / <sub>4</sub> | 9                              | 160 | 18 <sup>7</sup> / <sub>8</sub> | 15 <sup>1</sup> / <sub>2</sub> | 14 <sup>1</sup> / <sub>4</sub> | 31 <sup>1</sup> / <sub>4</sub> |
| 275 or 300               | 5500               | 26 <sup>1</sup> / <sub>4</sub> | 26                             | 2 <sup>1</sup> / <sub>2</sub> | 4                              | 57                             | 27                             | 6                              | 140 | 16 <sup>3</sup> / <sub>8</sub> | 15 <sup>1</sup> / <sub>2</sub> | 14 <sup>1</sup> / <sub>4</sub> | 32 <sup>1</sup> / <sub>4</sub> |
| 400/275 or 300           | 6002               | 26 <sup>1</sup> / <sub>4</sub> | 26                             | 2 <sup>1</sup> / <sub>2</sub> | 6 <sup>1</sup> / <sub>2</sub>  | 57                             | 27                             | 8 <sup>1</sup> / <sub>2</sub>  | 160 | 18 <sup>7</sup> / <sub>8</sub> | 15 <sup>1</sup> / <sub>2</sub> | 14 <sup>1</sup> / <sub>4</sub> | 25 <sup>3</sup> / <sub>4</sub> |
| 600/275 or 300           | 6423               | 26 <sup>1</sup> / <sub>4</sub> | 26                             | 2 <sup>1</sup> / <sub>2</sub> | 11 <sup>1</sup> / <sub>2</sub> | 57                             | 27                             | 13 <sup>1</sup> / <sub>2</sub> | 180 | 23 <sup>7</sup> / <sub>8</sub> | 15 <sup>1</sup> / <sub>2</sub> | 14 <sup>1</sup> / <sub>4</sub> | 32 <sup>1</sup> / <sub>4</sub> |
| 325, 350 or 400          | 6600               | 21 <sup>1</sup> / <sub>4</sub> | 32                             | 3 <sup>3</sup> / <sub>4</sub> | 6 <sup>1</sup> / <sub>2</sub>  | 57                             | 27                             | 8 <sup>1</sup> / <sub>2</sub>  | 160 | 18 <sup>7</sup> / <sub>8</sub> | 15 <sup>1</sup> / <sub>2</sub> | 14 <sup>1</sup> / <sub>4</sub> | 33 <sup>1</sup> / <sub>4</sub> |
| 600/325, 350 or 400      | 6851               | 21 <sup>1</sup> / <sub>4</sub> | 32                             | 3 <sup>3</sup> / <sub>4</sub> | 11 <sup>1</sup> / <sub>2</sub> | 57                             | 27                             | 13 <sup>1</sup> / <sub>2</sub> | 180 | 23 <sup>7</sup> / <sub>8</sub> | 15 <sup>1</sup> / <sub>2</sub> | 14 <sup>1</sup> / <sub>4</sub> | 33 <sup>1</sup> / <sub>4</sub> |
| 500, 550 or 600          | 8871               | 27 <sup>1</sup> / <sub>4</sub> | 32                             | 4                             | 6 <sup>1</sup> / <sub>4</sub>  | 67 <sup>1</sup> / <sub>2</sub> | 25                             | 8 <sup>1</sup> / <sub>2</sub>  | 180 | 23 <sup>7</sup> / <sub>8</sub> | 15 <sup>1</sup> / <sub>2</sub> | 14 <sup>1</sup> / <sub>4</sub> | 31 <sup>1</sup> / <sub>4</sub> |

**NOTE:** All dimensions in inches subject to manufacturing tolerances.