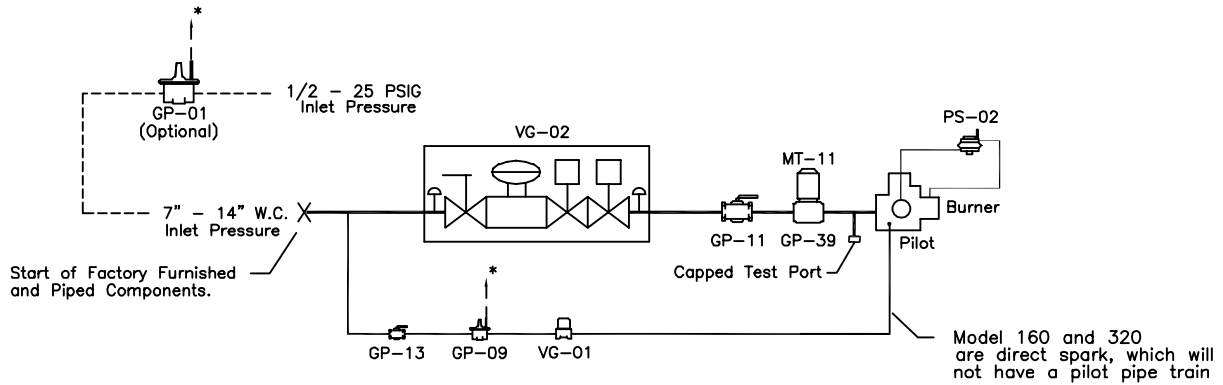


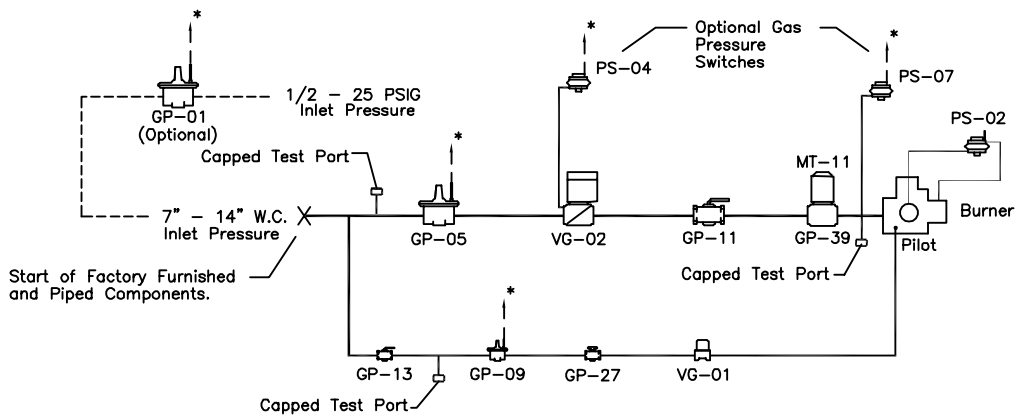
Gas Piping Layout

Schematic Component Diagrams

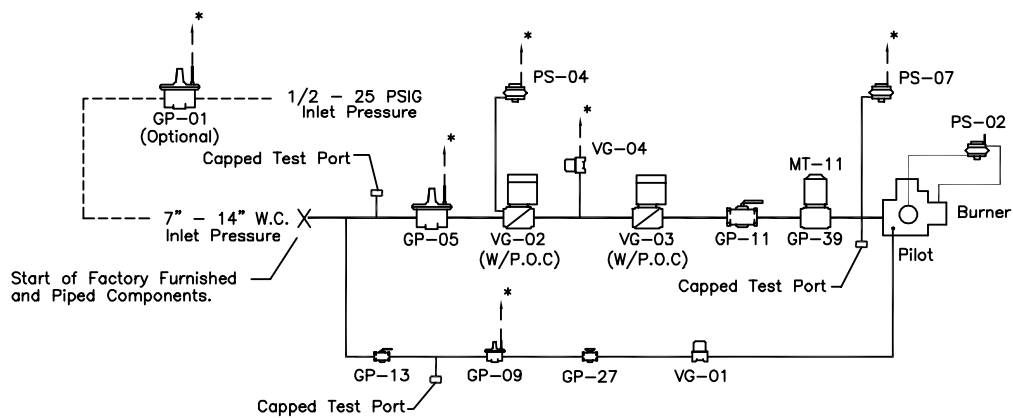
C000558



STANDARD & FM & IRI SIZES 160 UP TO 480



STANDARD & FM & IRI SIZES 800 & 1120



"BLOCK & BLEED" OPTION FOR SIZES 800 & 1120

COMPONENT IDENTIFICATION

GP-01 HIGH GAS PRESSURE REGULATOR (OPTIONAL)
 GP-05 MAIN GAS PRESSURE REGULATOR
 GP-09 PILOT GAS PRESSURE REGULATOR
 GP-11 FIRING VALVE
 GP-13 PILOT FIRING VALVE
 GP-27 NEEDLE ORIFICE VALVE
 GP-39 BUTTERFLY VALVE
 MT-11 MODULATING VALVE MOTOR

VG-01 PILOT GAS VALVE
 VG-02 MAIN GAS VALVE
 VG-03 AUXILIARY GAS VALVE
 VG-04 N/O VENT VALVE
 PS-02 BURNER AIR FLOW SWITCH
 PS-04 LOW GAS PRESSURE SWITCH
 PS-07 HIGH GAS PRESSURE SWITCH

NOTES:

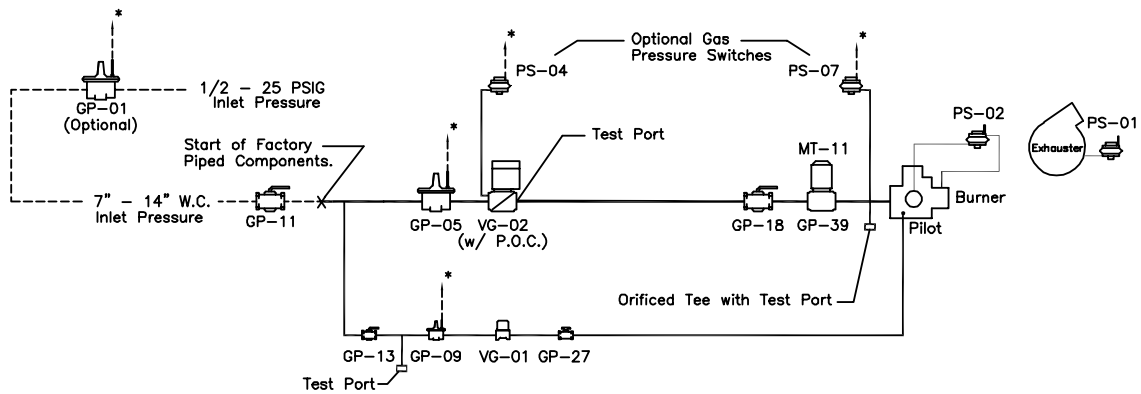
- * 1. Vent limiting devices provided wherever possible, when venting is required the venting to outside is by others on indoor units and furnished by factory on outdoor units.
2. For inlet pressures under 7" W.C. please consult factory.

Gas Piping Layout

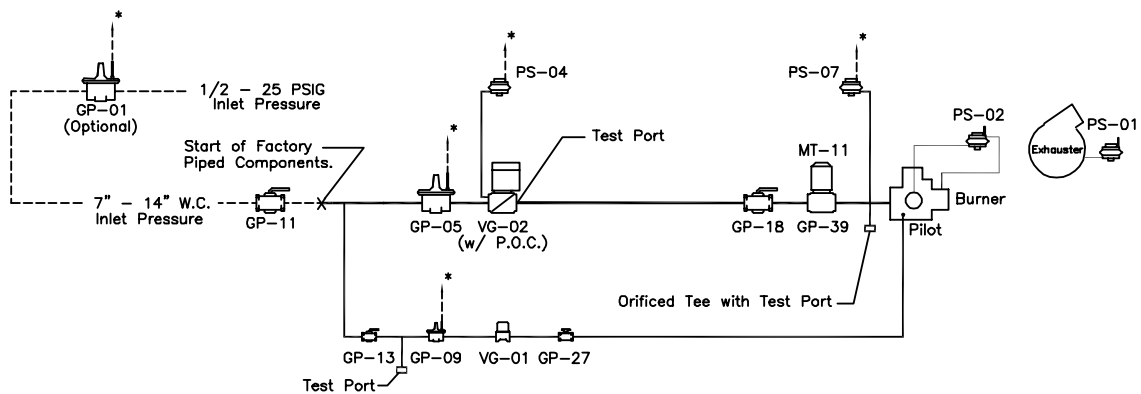
Schematic Component Diagrams

C000528

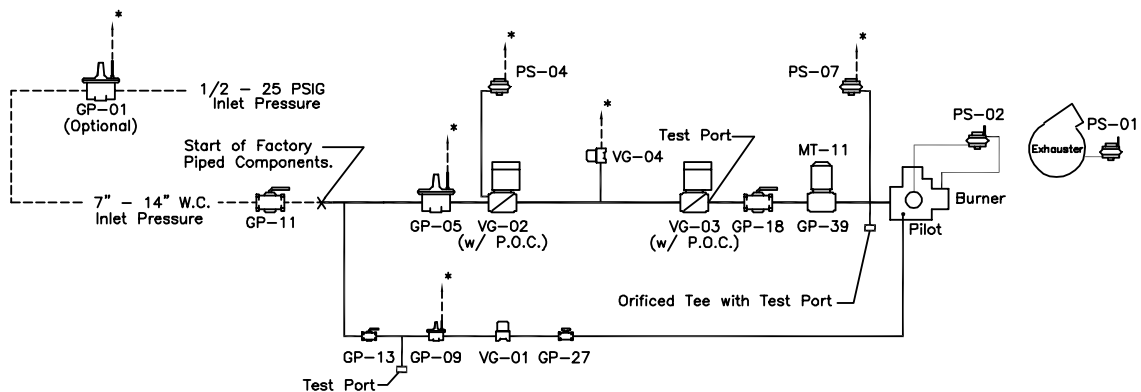
SCHEMATIC COMPONENT DIAGRAMS



STANDARD & FM & IRI SIZES 25 UP TO 200



STANDARD & FM & IRI SIZES 250 UP TO 600



"BLOCK & BLEED" OPTION FOR ALL SIZES

COMPONENT IDENTIFICATION

GP-01 HIGH GAS PRESSURE REGULATOR
 GP-05 MAIN GAS PRESSURE REGULATOR
 GP-09 PILOT PRESSURE REGULATOR
 GP-11 MAIN GAS SHUT-OFF VALVE (SHIP LOOSE)
 GP-13 PILOT GAS SHUT-OFF VALVE
 GP-18 AUXILIARY GAS SHUT-OFF VALVE
 GP-27 ORIFICED NEEDLE VALVE
 GP-39 BUTTERFLY VALVE

MT-11 BUTTERFLY VALVE OPERATOR (MODULATING BURNERS ONLY)
 PS-01 DRAFT PROVING SWITCH
 PS-02 BURNER AIR FLOW SWITCH
 PS-04 LOW GAS PRESSURE SWITCH
 PS-07 HIGH GAS PRESSURE SWITCH
 VG-01 PILOT GAS VALVE
 VG-02 MAIN GAS VALVE
 VG-03 AUXILIARY GAS VALVE
 VG-04 N/O VENT VALVE

NOTES:

- *Vent limiting devices provided wherever possible, when venting is required the venting to outside is by others on indoor units and furnished by factory on outdoor units.
- All models require 7" W.C. minimum inlet pressure. Contact factory for inlet pressures below this minimum.