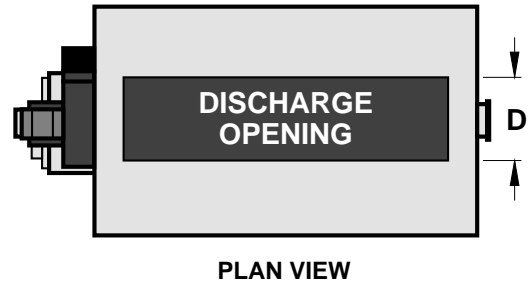


TDM Series Indirect Fired Heaters

Indoor Unit Dimensions – Arrangement D (Upflow)

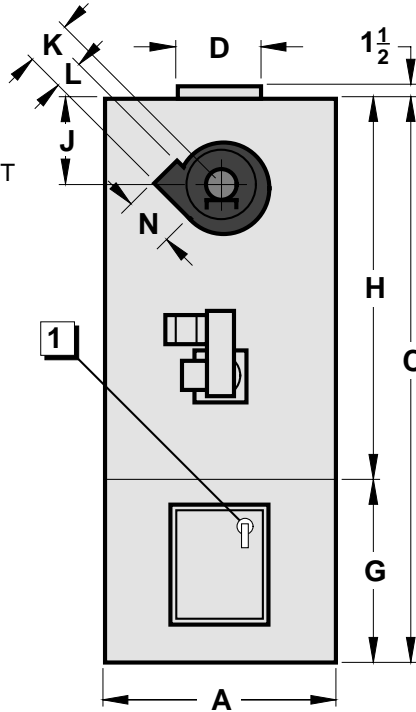
Components:

1. MAIN DISCONNECT SWITCH
2. INDUCED DRAFT FAN
3. BURNER
4. MODELS 125-600 SPLIT FOR SHIPMENT
5. CONTROL PANEL
6. CLEANOUT PANEL
7. INSPECTION & RELIEF PORT
8. FAN & MOTOR ACCESS

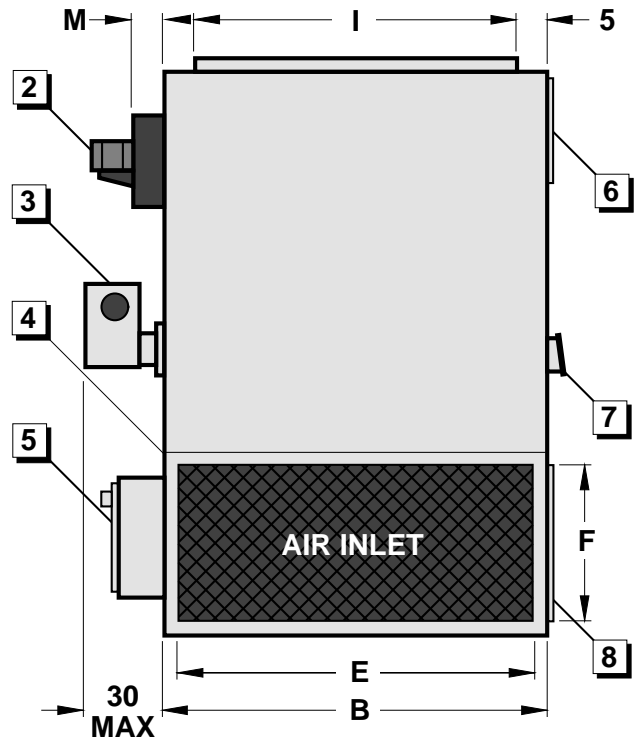


Notes:

1. ALL DIMENSIONS ARE IN INCHES AND SUBJECT TO MANUFACTURING TOLERANCES.
2. PROVIDE 42 INCH SERVICE CLEARANCE AT FRONT AND BACK OF UNIT



FRONT ELEVATION



RIGHT SIDE ELEVATION

DIMENSIONS

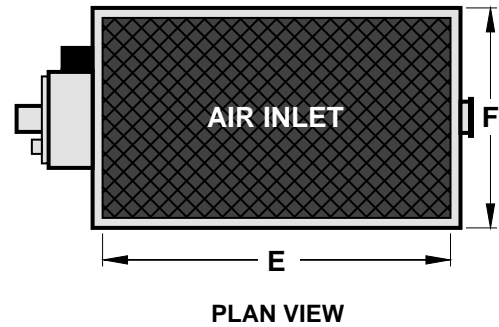
TDM Model	Dimensions														Unit Weight (Lbs.)
	A	B	C	D	E	F	G	H	I	J	K*	L*	M*	N*	
25-35	38	48	98	18	44	34	38	60	38	14	9 $\frac{1}{2}$	6 $\frac{3}{8}$	6 $\frac{5}{8}$	9	1300
40-55	38	60	98	18	56	34	38	60	50	14	9 $\frac{1}{2}$	6 $\frac{3}{8}$	6 $\frac{5}{8}$	9	1500
65-75	38	80	98	18	76	34	38	60	70	14	9 $\frac{1}{2}$	6 $\frac{3}{8}$	6 $\frac{5}{8}$	9	1950
85-100	48	80	110	18	76	38	42	68	70	15 $\frac{1}{2}$	9 $\frac{1}{2}$	6 $\frac{3}{8}$	6 $\frac{5}{8}$	9	2500
125-175	54	100	121	24	96	38	42	79	90	21 $\frac{1}{2}$	13 $\frac{7}{8}$	9 $\frac{1}{8}$	9 $\frac{5}{8}$	13 $\frac{1}{2}$	3350
200-250	60	120	130	30	116	38	42	88	110	24 $\frac{1}{2}$	13 $\frac{7}{8}$	9 $\frac{1}{8}$	9 $\frac{5}{8}$	13 $\frac{1}{2}$	4200
275	65	140	137	30	136	41	45	92	130	18	13 $\frac{7}{8}$	9 $\frac{1}{8}$	9 $\frac{5}{8}$	13 $\frac{1}{2}$	5950
300-400	70	160	151	30	156	41	45	106	150	20	16 $\frac{1}{4}$	10 $\frac{3}{4}$	11 $\frac{3}{8}$	15 $\frac{1}{2}$	7600
500-600	80	180	219	48	176	74	78	141	170	14	19 $\frac{7}{16}$	12 $\frac{7}{16}$	11 $\frac{1}{8}$	15 $\frac{3}{8}$	13600

*Note: For Model 100 Oil Fired Unit K = 10 $\frac{7}{8}$, L = 7 $\frac{7}{8}$, M = 7 $\frac{5}{8}$, N = 10 $\frac{1}{2}$

Indoor Unit Dimensions – Arrangement R (Downflow)

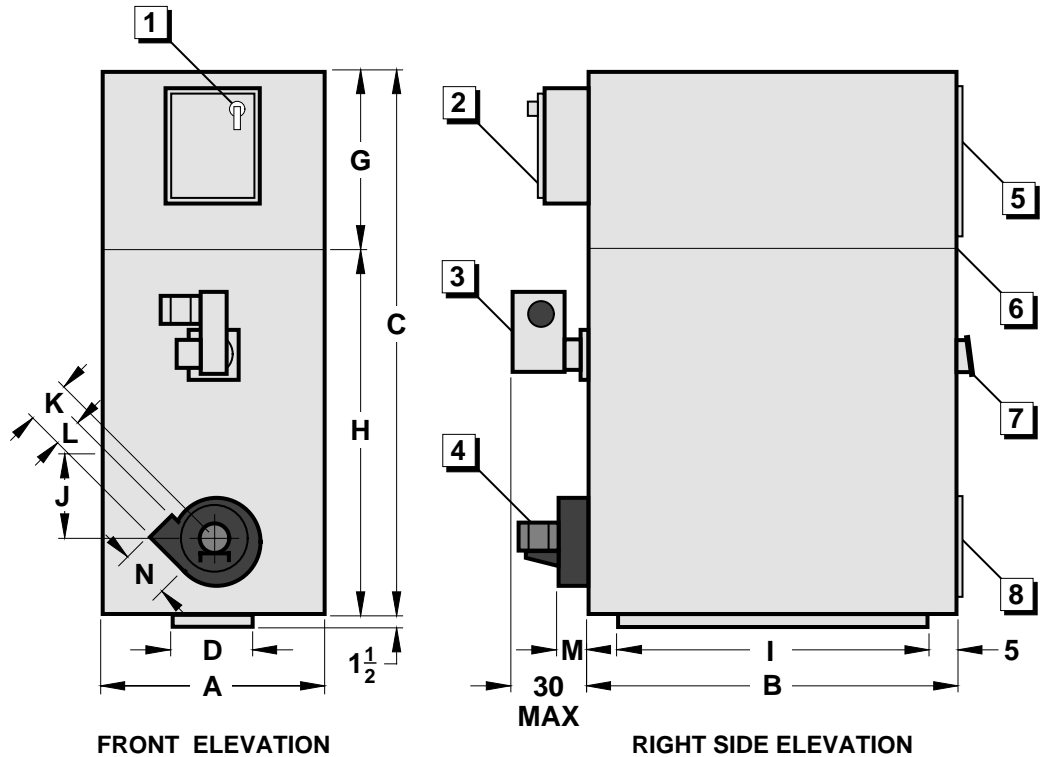
Components:

1. MAIN DISCONNECT SWITCH
2. CONTROL PANEL
3. BURNER
4. INDUCED DRAFT FAN
5. FAN & MOTOR ACCESS
6. MODELS 125-600 SPLIT FOR SHIPMENT
7. INSPECTION & RELIEF PORT
8. CLEANOUT PANEL



Notes:

1. ALL DIMENSIONS ARE IN INCHES AND SUBJECT TO MANUFACTURING TOLERANCES.
2. PROVIDE 42 INCH SERVICE CLEARANCE AT FRONT AND BACK OF UNIT



DIMENSIONS

TDM Model	Dimensions														Unit Weight (Lbs.)
	A	B	C	D	E	F	G	H	I	J	K*	L*	M*	N*	
25-35	38	48	98	18	44	34	38	60	38	14	9 $\frac{1}{2}$	6 $\frac{3}{8}$	6 $\frac{5}{8}$	9	1300
40-55	38	60	98	18	56	34	38	60	50	14	9 $\frac{1}{2}$	6 $\frac{3}{8}$	6 $\frac{5}{8}$	9	1500
65-75	38	80	98	18	76	34	38	60	70	14	9 $\frac{1}{2}$	6 $\frac{3}{8}$	6 $\frac{5}{8}$	9	1950
85-100	48	80	110	18	76	38	42	68	70	15 $\frac{1}{2}$	9 $\frac{1}{2}$	6 $\frac{3}{8}$	6 $\frac{5}{8}$	9	2500
125-175	54	100	121	24	96	38	42	79	90	21 $\frac{1}{2}$	13 $\frac{7}{8}$	9 $\frac{1}{8}$	9 $\frac{5}{8}$	13 $\frac{1}{2}$	3350
200-250	60	120	130	30	116	38	42	88	110	24 $\frac{1}{2}$	13 $\frac{7}{8}$	9 $\frac{1}{8}$	9 $\frac{5}{8}$	13 $\frac{1}{2}$	4200
275	65	140	137	30	136	41	45	92	130	18	13 $\frac{7}{8}$	9 $\frac{1}{8}$	9 $\frac{5}{8}$	13 $\frac{1}{2}$	5950
300-400	70	160	151	30	156	41	45	106	150	20	16 $\frac{1}{4}$	10 $\frac{3}{4}$	11 $\frac{3}{8}$	15 $\frac{1}{2}$	7600
500-600	80	180	219	48	176	74	78	141	170	14	19 $\frac{7}{16}$	12 $\frac{7}{16}$	11 $\frac{1}{8}$	15 $\frac{3}{8}$	13600

*Note: For Model 100 Oil Fired Unit K = 10 $\frac{7}{8}$, L = 7 $\frac{7}{8}$, M = 7 $\frac{5}{8}$, N = 10 $\frac{1}{2}$

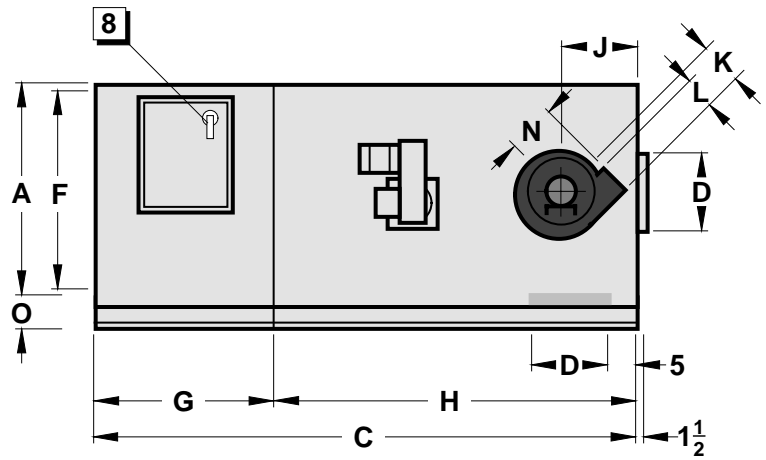
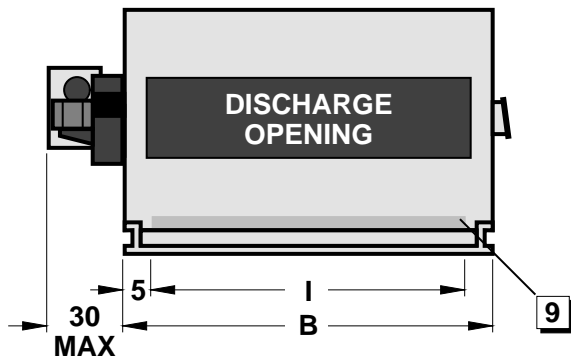
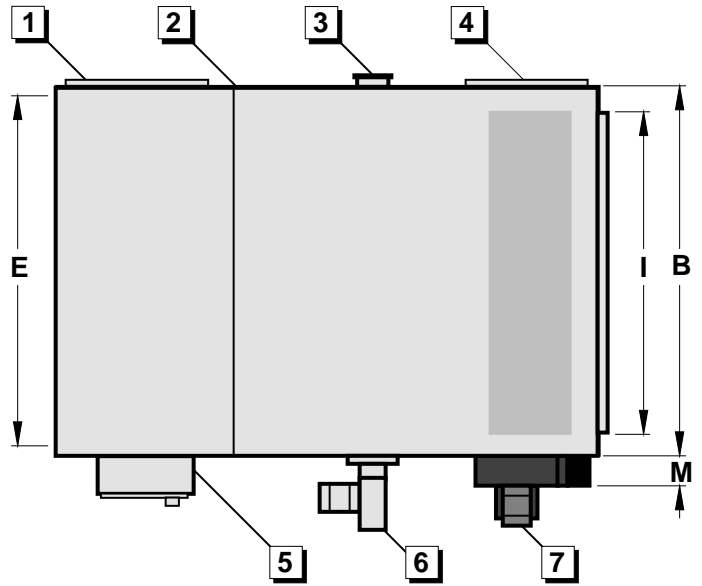
Indoor Unit Dimensions – Arrangement C (Horizontal Flow)

Components:

1. FAN & MOTOR ACCESS
2. MODELS 125-600 SPLIT FOR SHIPMENT
3. INSPECTION & RELIEF PORT
4. CLEANOUT PANEL
5. CONTROL PANEL
6. BURNER
7. INDUCED DRAFT FAN
8. MAIN DISCONNECT SWITCH
9. OPTIONAL DOWN BLAST DISCHARGE (PLENUM EXTENSION REQ'D ON TDM 500-600)

Notes:

1. ALL DIMENSIONS ARE IN INCHES AND SUBJECT TO MANUFACTURING TOLERANCES.
2. PROVIDE 42 INCH SERVICE CLEARANCE AT FRONT AND BACK OF UNIT.



DIMENSIONS

TDM Model	Dimensions															Unit Weight (Lbs.)
	A	B	C	D	E	F	G	H	I	J	K*	L*	M*	N*	O	
25-35	38	48	98	18	44	34	38	60	38	14	9 1/2	6 3/8	6 5/8	9	4	1300
40-55	38	60	98	18	56	34	38	60	50	14	9 1/2	6 3/8	6 5/8	9	4	1500
65-75	38	80	98	18	76	34	38	60	70	14	9 1/2	6 3/8	6 5/8	9	4	1950
85-100	48	80	110	18	76	44	42	68	70	15 1/2	9 1/2	6 3/8	6 5/8	9	4	2500
125-175	54	100	121	24	96	50	42	79	90	21 1/2	13 7/8	9 1/8	9 5/8	13 1/2	6	3350
200-250	60	120	130	30	116	56	42	88	110	24 1/2	13 7/8	9 1/8	9 5/8	13 1/2	6	4200
275	65	140	137	30	136	61	45	92	130	18	13 7/8	9 1/8	9 5/8	13 1/2	6	5950
300-400	70	160	151	30	156	66	45	106	150	20	16 1/4	10 3/4	11 3/8	15 1/2	8	7600
500-600	80	180	219	48	176	76	78	141	170	14	19 7/16	12 7/16	11 1/8	15 3/8	8	13600

*Note: For Model 100 Oil Fired Unit K = 10 7/8, L = 7 7/8, M = 7 5/8, N = 10 1/2

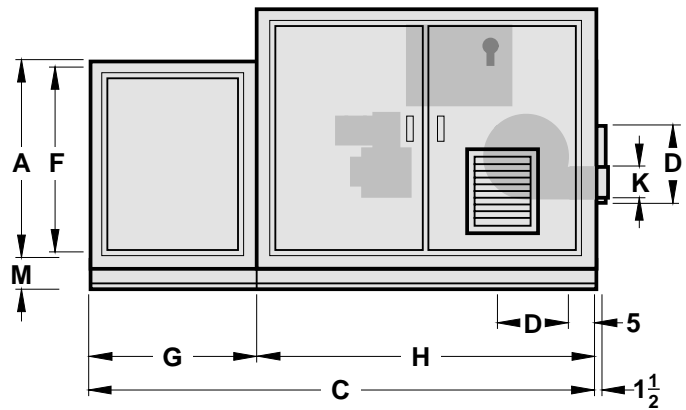
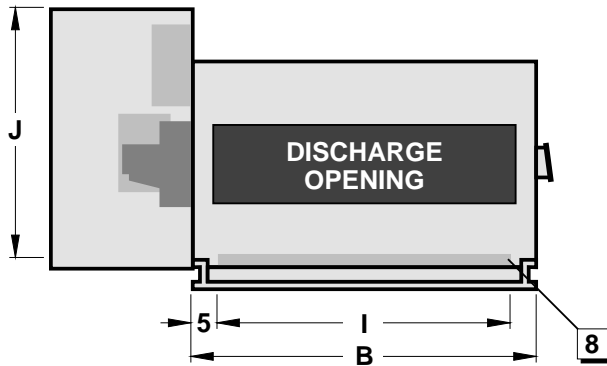
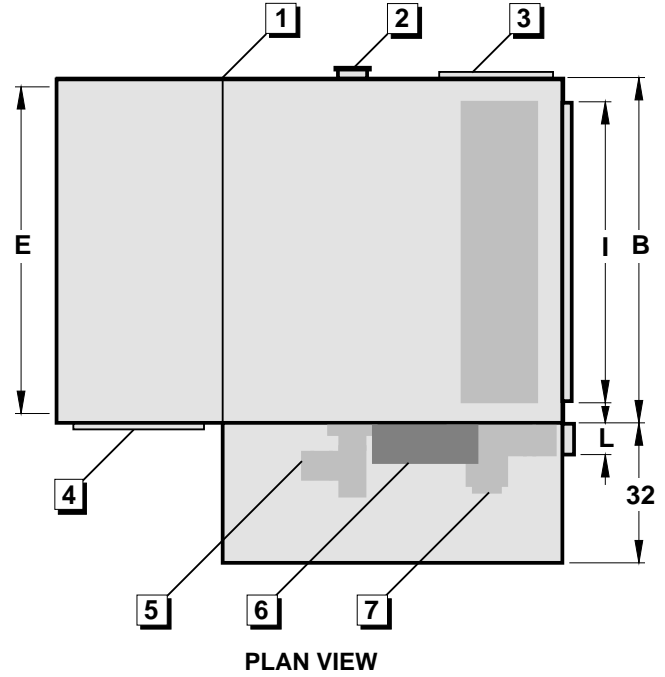
Outdoor Unit Dimensions – Arrangement CW (Horizontal Flow)

Components:

1. MODELS 125-600 SPLIT FOR SHIPMENT
2. INSPECTION & RELIEF PORT
3. CLEANOUT PANEL
4. FAN & MOTOR ACCESS
5. BURNER
6. CONTROL PANEL
7. INDUCED DRAFT FAN
8. OPTIONAL DOWN BLAST DISCHARGE
(PLENUM EXTENSION REQ'D ON TDM 500-600)

Notes:

1. ALL DIMENSIONS ARE IN INCHES AND SUBJECT TO MANUFACTURING TOLERANCES.



DIMENSIONS

TDM Model	Dimensions													Unit Weight (Lbs.)
	A	B	C	D	E	F	G	H	I	J	K*	L*	M	
25-35	38	48	98	18	44	34	38	60	38	54	6 ³ / ₈	6 ⁵ / ₈	4	1600
40-55	38	60	98	18	56	34	38	60	50	54	6 ³ / ₈	6 ⁵ / ₈	4	1800
65-75	38	80	98	18	76	34	38	60	70	54	6 ³ / ₈	6 ⁵ / ₈	4	2250
85-100	48	80	110	18	76	44	42	68	70	58	6 ³ / ₈	6 ⁵ / ₈	4	2800
125-175	54	100	121	24	96	50	42	79	90	66	9 ¹ / ₈	9 ⁵ / ₈	6	3750
200-250	60	120	130	30	116	56	42	88	110	70	9 ¹ / ₈	9 ⁵ / ₈	6	4650
275	65	140	137	30	136	61	45	92	130	75	9 ¹ / ₈	9 ⁵ / ₈	6	6400
300-400	70	160	151	30	156	66	45	106	150	80	10 ³ / ₄	11 ³ / ₈	8	8150
500-600	80	180	219	48	176	76	78	141	170	80	12 ⁷ / ₁₆	11 ¹ / ₈	8	15500

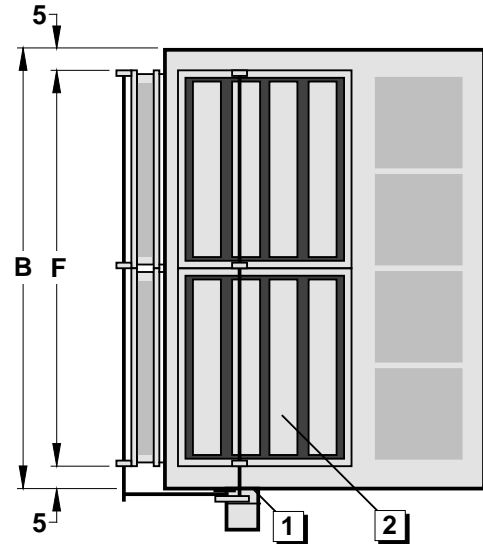
*Note: For Model 100 Oil Fired Unit K = 7¹/₈, L = 7⁵/₈

TDM Series Indirect Fired Heaters

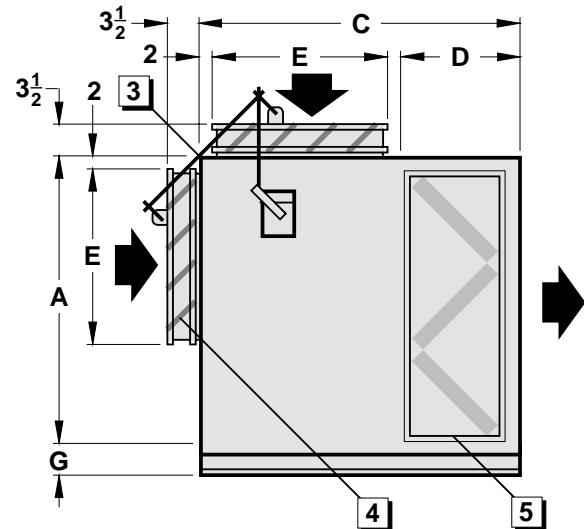
Indoor Filter and Mixing Box Dimensions

Components:

1. DAMPER MOTOR(S)
2. PARALLEL BLADE FRESH AIR DAMPER
3. JACKSHAFT ASSEMBLY
(SUPPLIED ON DAMPERS OVER 48" WIDE)
4. PARALLEL BLADE RETURN AIR DAMPER
5. FILTER ACCESS (CAN BE AT EITHER END)



PLAN VIEW



FRONT ELEVATION

Notes:

1. ALL DIMENSIONS ARE IN INCHES AND SUBJECT TO MANUFACTURING TOLERANCES.
2. FILTERS SUPPLIED ARE 2" THICK REPLACEABLE FIBERGLASS MEDIA WITH PERMANENT GALVANIZED HOLDING FRAMES. FILTER CAPACITY IS BASED ON NOMINAL RATED VELOCITY OF 500 F.P.M. OPTIONAL FILTERS AVAILABLE.
3. DAMPERS SUPPLIED HAVE 16 GAUGE GALVANIZED STEEL BLADES WITH CYCOLOY BEARINGS.
4. ON HORIZONTAL UNITS THE FILTER BOX OR FILTER MIXING BOX IS ATTACHED TO THE COMMON CHANNEL BASE. ON UPFLOW OR DOWNFLOW ARRANGEMENTS THE FILTER BOX OR MIXING BOX DO NOT INCLUDE CHANNEL BASES.

DIMENSIONS

TDM Model	Capacity CFM	Dimensions							No. & Size of Filters	Filter Box Weight (Lbs.)	Filter/Mix Box Weight (Lbs.)
		A	B	C*	D**	E	F	G			
25-35	5600	38	48	48	23	18	38	4	4-20X20X2	120	410
40-55	8400	38	60	48	23	18	50	4	6-20X20X2	135	475
65-75	11200	38	80	48	23	18	70	4	8-20X20X2	175	610
85-100	16800	48	80	48	23	18	70	4	12-20X20X2	225	705
125-175	21000	54	100	54	23	24	90	6	15-20X20X2	310	875
200-250	33600	60	120	62	25	30	110	6	24-20X20X2	385	1160
275	39200	65	140	62	25	30	130	6	28-20X20X2	405	1435
300-400	44800	70	160	60	23	30	150	8	32-20X20X2	570	1645
500-600	56500	80	180	66	23	36	170	8	45-20X20X2	900	2500

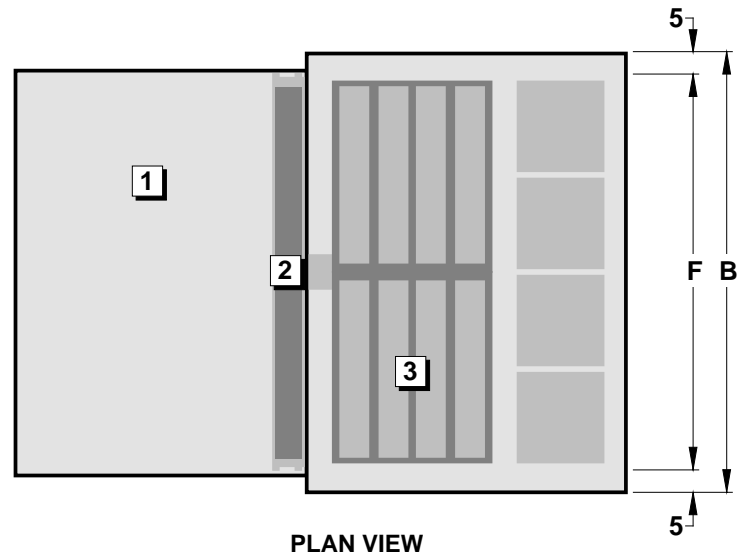
Note: * Dimensions for Filter and Mixing Box **Dimensions for Filter Box Only

TDM Series Indirect Fired Heaters

Outdoor Filter and Mixing Box Dimensions

Components:

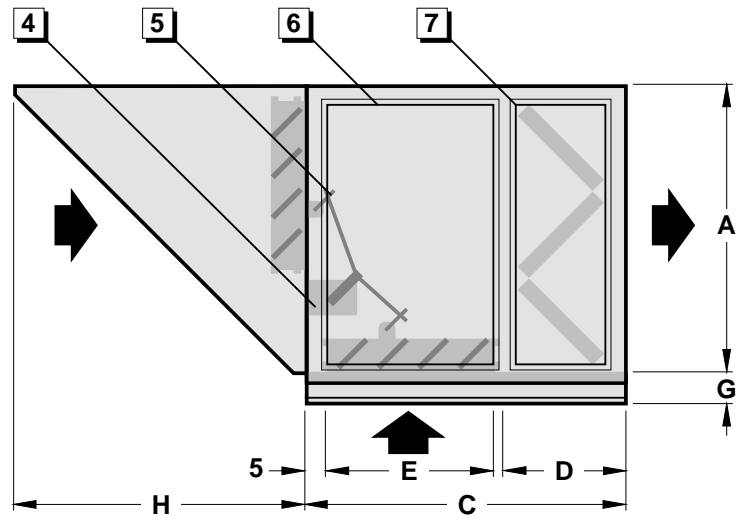
1. INLET COWL & BIRDSCREEN
2. PARALLEL BLADE FRESH AIR DAMPER
3. PARALLEL BLADE RETURN AIR DAMPER
4. DAMPER MOTOR(S)
5. JACKSHAFT ASSEMBLY
(SUPPLIED ON DAMPERS OVER 48" WIDE)
6. DAMPER ACCESS (CAN BE AT EITHER END)
7. FILTER ACCESS (CAN BE AT EITHER END)



PLAN VIEW

Notes:

1. ALL DIMENSIONS ARE IN INCHES AND SUBJECT TO MANUFACTURING TOLERANCES.
2. FILTERS SUPPLIED ARE 2" THICK REPLACEABLE FIBERGLASS MEDIA WITH PERMANENT GALVANIZED HOLDING FRAMES. FILTER CAPACITY IS BASED ON NOMINAL RATED VELOCITY OF 500 F.P.M. OPTIONAL FILTERS AVAILABLE.
3. DAMPERS SUPPLIED HAVE 16 GAUGE GALVANIZED STEEL BLADES
4. THE INLET COWL AND BIRDSREEN IS FITTED IN THE FACTORY. ON MODELS 275-600 THE INLET COWL AND BIRDSREEN IS SHIPPED SEPARATELY WITH NECESSARY HARDWARE FOR FIELD INSTALLATION.



FRONT ELEVATION

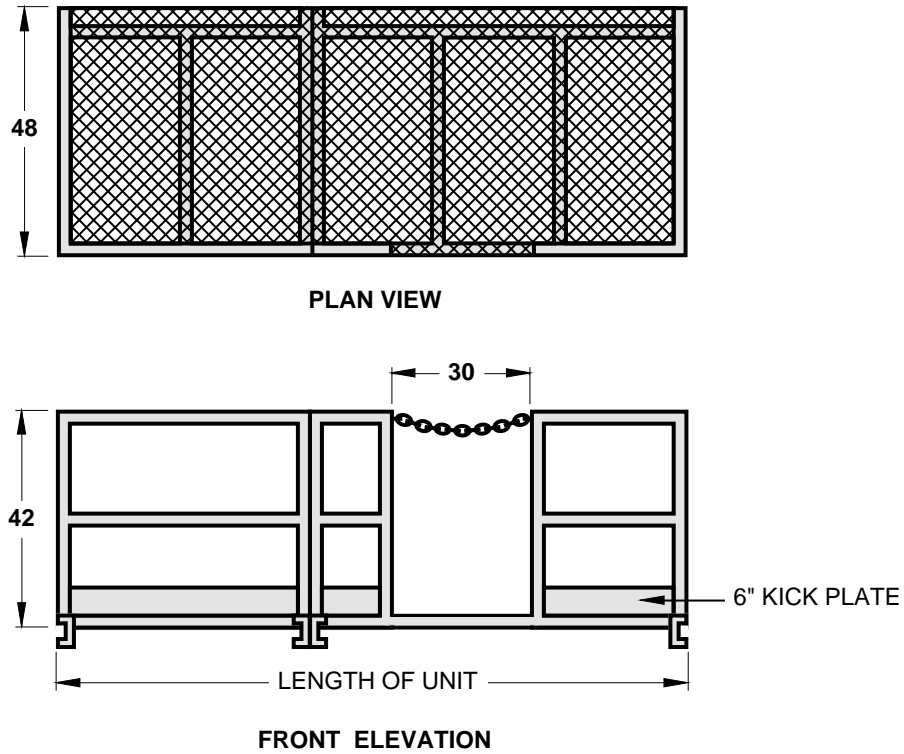
DIMENSIONS

TDM Model	Capacity CFM	Dimensions								No. & Size of Filters	Filter Box Weight (Lbs.)	Filter/Mix Box Weight (Lbs.)	Inlet Cowl Weight (Lbs.)
		A	B	C*	D**	E	F	G	H				
25-35	5600	38	48	48	23	18	38	4	42	4-20X20X2	120	410	100
40-55	8400	38	60	48	23	18	50	4	42	6-20X20X2	135	475	110
65-75	11200	38	80	48	23	18	70	4	42	8-20X20X2	175	610	135
85-100	16800	48	80	48	23	18	70	4	52	12-20X20X2	225	705	275
125-175	21000	54	100	54	23	24	90	6	55	15-20X20X2	310	875	400
200-250	33600	60	120	62	25	30	110	6	61	24-20X20X2	385	1160	510
275	39200	65	140	62	25	30	130	6	66	28-20X20X2	405	1435	600
300-400	44800	70	160	60	23	30	150	8	71	32-20X20X2	570	1645	690
500-600	56500	80	180	66	34	36	170	8	81	45-20X20X2	900	2500	1100

Note: * Dimensions for Filter and Mixing Box **Dimensions for Filter Box Only

Service Platforms

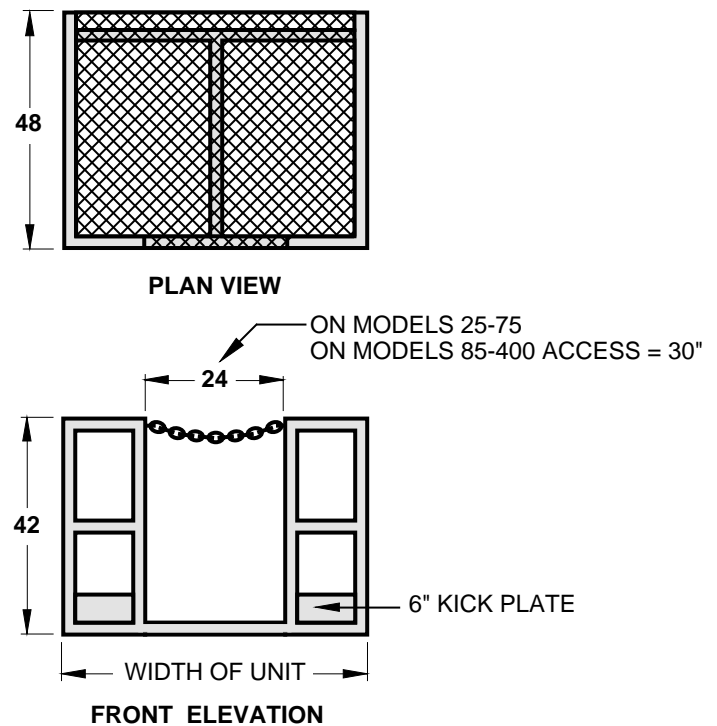
Service Platform — Arrangement C (Horizontal Flow)



Service Platform — Arrangement R (Downflow)

Note:

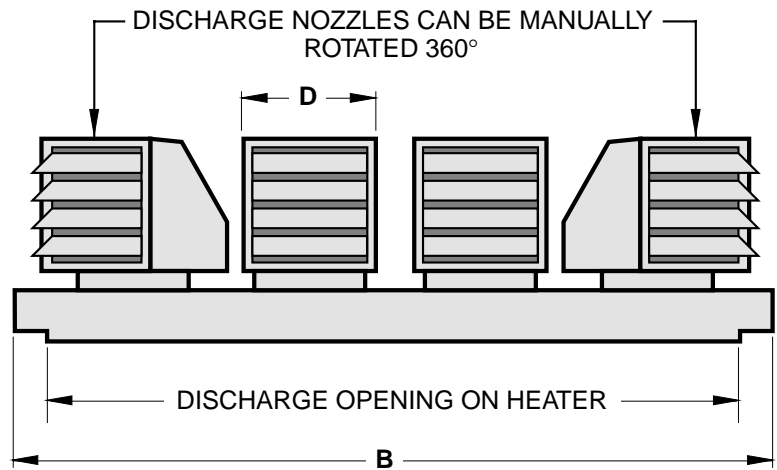
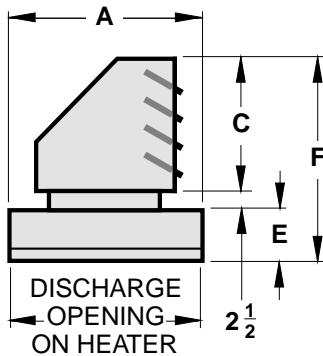
- 1. OPTIONAL CHANNEL SUPPORTED PLATFORM AVAILABLE



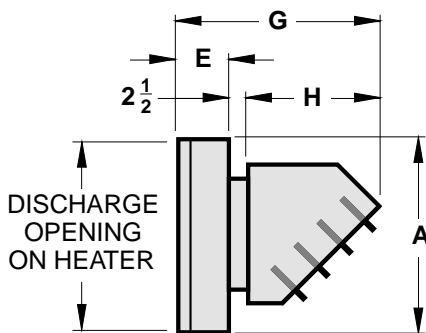
TDM Series Indirect Fired Heaters

Discharge Plenum & Nozzle Dimensions

90° DISCHARGE NOZZLES



45° DISCHARGE NOZZLES



Notes:

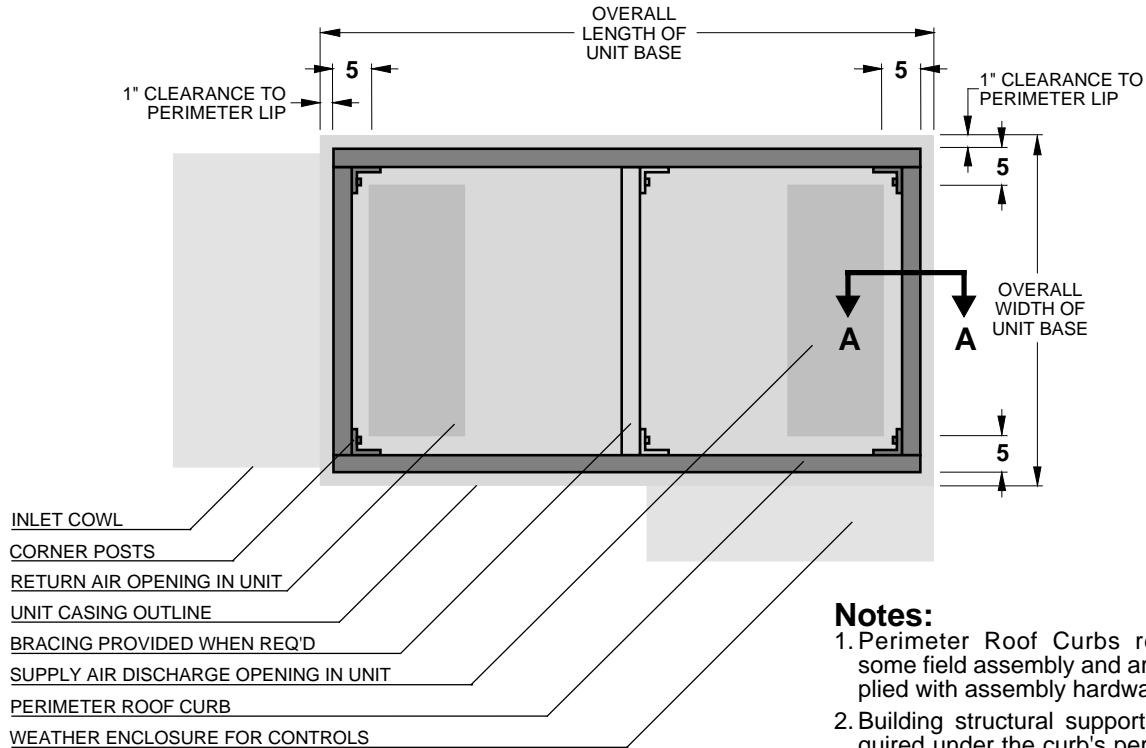
1. ALL DIMENSIONS ARE IN INCHES AND SUBJECT TO MANUFACTURING TOLERANCES.
2. DIFFUSING VANES ARE ADJUSTABLE.
3. DISCHARGE PLENUM AND NOZZLES ARE SHIPPED LOOSE FOR FIELD INSTALLATION BY OTHERS.
4. CUSTOM DESIGNS AVAILABLE.

DIMENSIONS

TDM Model	Dimensions								No. of Nozzles	Weight (Lbs.)
	A	B	C	D	E	F	G	H		
25-35	18	48	15	15	6 1/2	24	22 1/2	13 1/2	2	60
40-55	18	60	15	15	6 1/2	24	22 1/2	13 1/2	3	85
65-75	18	80	15	15	6 1/2	24	22 1/2	13 1/2	4	135
85-100	18	80	15	15	6 1/2	24	22 1/2	13 1/2	4	135
125-175	24	100	18	18	6 1/2	27	24 1/2	15 1/2	5	205
200-250	30	120	18	18	6 1/2	27	24 1/2	15 1/2	5	265
275	30	140	18	18	6 1/2	27	24 1/2	15 1/2	6	310
300-400	30	160	18	18	6 1/2	27	24 1/2	15 1/2	7	360
500-600										

Perimeter Roof Curb

Typical Plan View

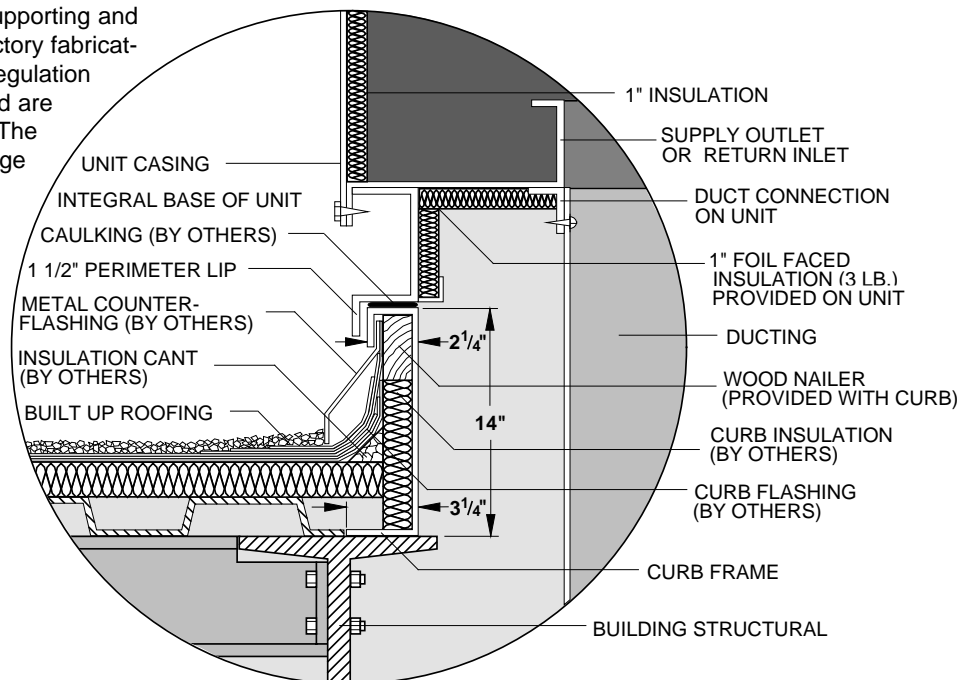


Notes:

1. Perimeter Roof Curbs require some field assembly and are supplied with assembly hardware.
2. Building structural support is required under the curb's perimeter and, on split units, under the centre brace as well.

Typical Mounting Details

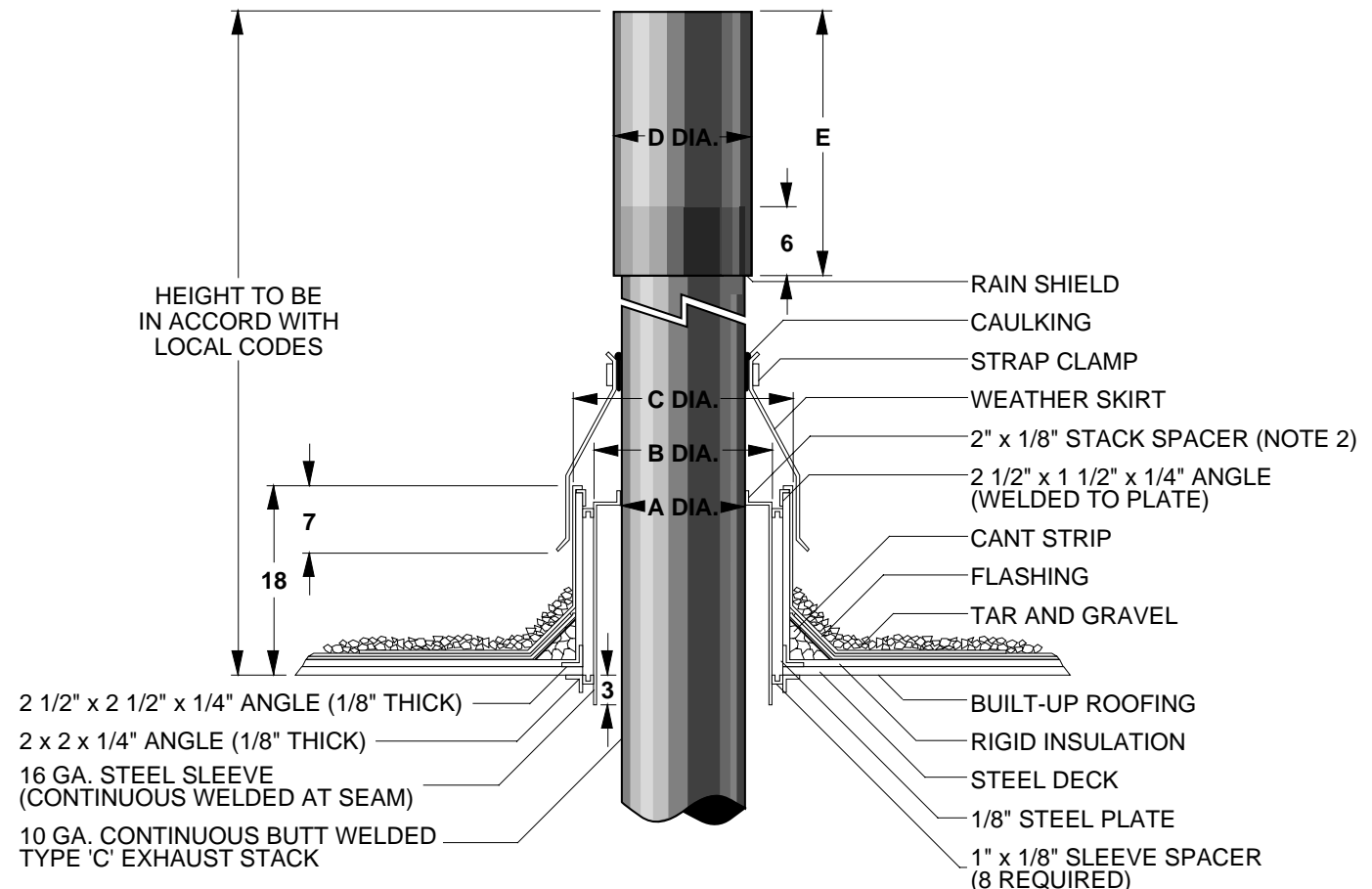
This is a suggested method of supporting and installing an outdoor unit on a factory fabricated perimeter type curb. All local regulation codes are to be conformed to and are the responsibility of the installer. The curb is fabricated from heavy gauge satincoat galvanized steel with a factory installed wood nailing strip. Sleeves are provided on the supply air opening(s) of the unit for the attachment of ducting. Consult notes on certified drawings for further installation instructions.



Section "A-A"

TDM Series Indirect Fired Heaters

Typical Type 'C' Stack Installation



DIMENSIONS

TDM Model	Dimensions in Inches				
	A	B	C	D	E
25-55	8	12	14	9	48
65-100	10	14	16	11	48
125-250	12	16	18	13	48
275-400	14	18	20	15	56
500-600	16	20	22	17	64

Notes:

1. WEIGHT OF STACK MUST BE SUPPORTED FROM FLOOR OR BUILDING STRUCTURE. DO NOT SUPPORT STACK FROM INDUCED DRAFT FAN ON UNIT.
2. FOUR (4) STACK SPACERS ARE REQUIRED—WELDED TO SLEEVE, BUT NOT TO THE STACK—TO ALLOW FOR CREEP DURING EXPANSION AND CONTRACTION.