

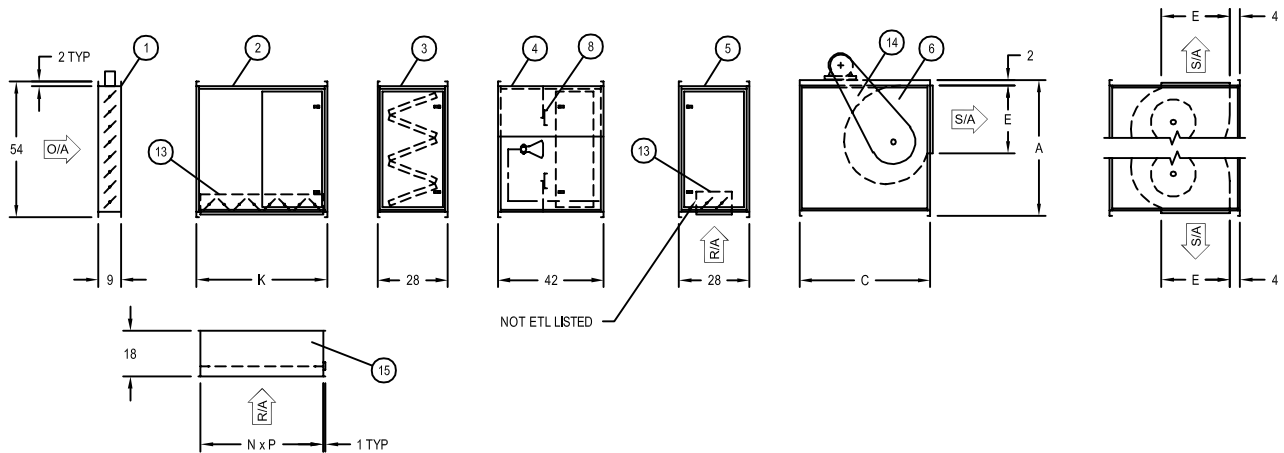
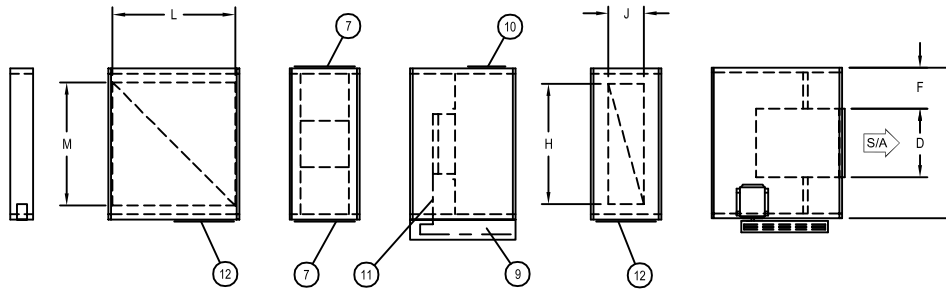
Dimensions

Single Blower Models – Horizontal Units

C000498

UNIT COMPONENTS

- | | | | |
|--------------------------------|-------------------------------|--------------------------------------|--|
| 1. Inlet Damper | 5. R/A section (after burner) | 9. Control cabinet | 13. Return air damper |
| 2. R/A section (before burner) | 6. Blower section | 10. Access door (piping compartment) | 14. Belt guard |
| 3. V-bank | 7. Filter access | 11. Gas piping manifold | 15. TracRite airflow station
(required for ETL listed
Return Air Unit) |
| 4. Burner section | 8. Adjustable profile | 12. R/A access | |



NOTE: Canadian standards do not allow recirculation on direct fired units.

Model	Dimensions												
	A	B	C	D	E	F	H	J	K	L	M	N	P
109	29	45	33	12	10 ¹ / ₂	16 ¹ / ₂	30	8 ¹ / ₄	28	23 ³ / ₄	34	25 ¹ / ₈	34 ¹ / ₂
112	29	45	33	15 ³ / ₄	13 ³ / ₈	14 ⁵ / ₈	30	8 ¹ / ₄	28	23 ³ / ₄	34	25 ¹ / ₈	34 ¹ / ₂
115	37 ¹ / ₄	51	43	18 ³ / ₄	16	16 ¹ / ₈	30	14 ¹ / ₄	43	39 ³ / ₄	40	40 ¹ / ₄	40 ¹ / ₂
118	37 ¹ / ₄	51	43	22	19	14 ¹ / ₂	30	14 ¹ / ₄	43	39 ³ / ₄	40	40 ¹ / ₄	40 ¹ / ₂
120	54	60	52	24 ⁷ / ₈	24 ⁷ / ₈	17 ⁹ / ₁₆	48	14 ¹ / ₄	52	48 ³ / ₄	49	49 ¹ / ₈	49 ¹ / ₂
122	54	60	52	27 ³ / ₈	27 ³ / ₈	16 ⁵ / ₁₆	48	14 ¹ / ₄	52	48 ³ / ₄	49	49 ¹ / ₈	49 ¹ / ₂
125	66	72	60	31 ³ / ₈	31 ³ / ₈	20 ⁵ / ₁₆	60	20 ¹ / ₄	52	48 ³ / ₄	61	49 ¹ / ₈	61 ¹ / ₂
130	66	72	60	36 ⁷ / ₈	36 ⁷ / ₈	17 ⁹ / ₁₆	60	20 ¹ / ₄	52	48 ³ / ₄	61	49 ¹ / ₈	61 ¹ / ₂

NOTE: All dimensions in inches subject to manufacturing tolerances.

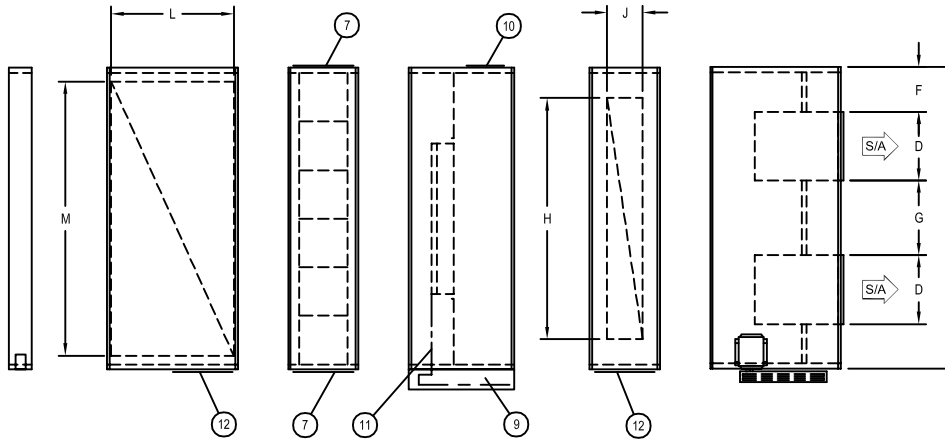
Dimensions

Twin Blower Models – Horizontal Units

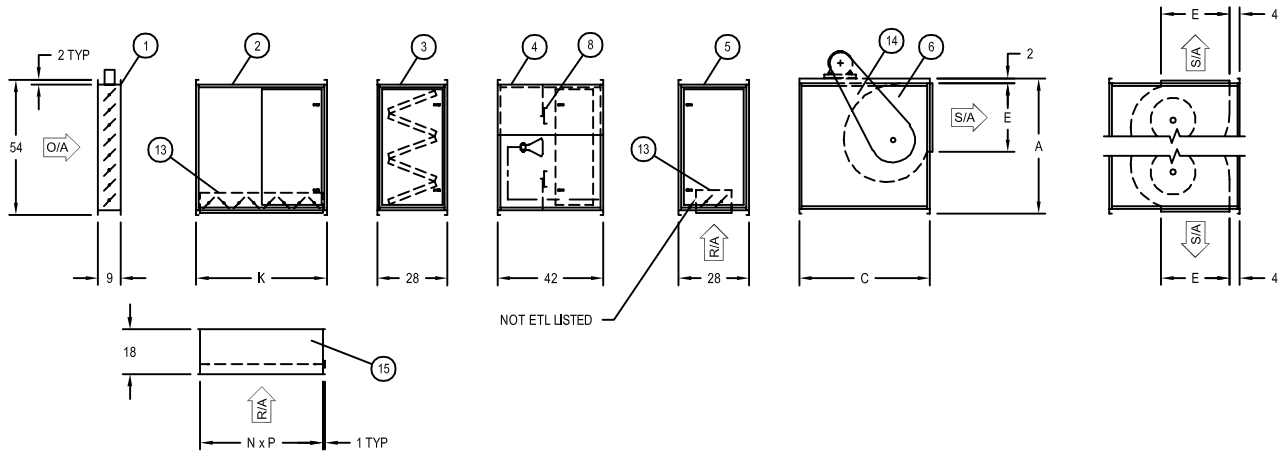
C000497

UNIT COMPONENTS

- | | | | |
|--------------------------------|-------------------------------|--------------------------------------|--|
| 1. Inlet damper | 5. R/A section (after burner) | 9. Control cabinet | 13. Return air damper |
| 2. R/A section (before burner) | 6. Blower section | 10. Access door (piping compartment) | 14. Belt guard |
| 3. V-bank | 7. Filter access | 11. Gas piping manifold | 15. TracRite airflow station
(Required for ETL listed
Return Air Unit) |
| 4. Burner section | 8. Adjustable profile | 12. R/A access | |



PLAN VIEW



FRONT VIEW

NOTE: Canadian standards do not allow recirculation on direct fired units.

Model	Dimensions													
	A	B	C	D	E	F	G	H	J	K	L	M	M	P
215	37 ¹ / ₄	93	43	18 ³ / ₄	16	16 ¹ / ₈	22 ¹ / ₂	79	10	43	39 ³ / ₄	82	40 ¹ / ₄	82 ¹ / ₂
218	37 ¹ / ₄	93	43	22	19	13 ¹ / ₄	22 ¹ / ₂	79	10	43	39 ³ / ₄	82	40 ¹ / ₄	82 ¹ / ₂
220	54	120	52	24 ⁷ / ₈	24 ⁷ / ₈	20 ¹ / ₄	29 ⁵ / ₈	96	14 ¹ / ₄	52	48 ³ / ₄	109	49 ¹ / ₈	109 ¹ / ₂
222	54	120	52	27 ³ / ₈	27 ³ / ₈	17 ³ / ₄	29 ⁵ / ₈	96	14 ¹ / ₄	52	48 ³ / ₄	109	49 ¹ / ₈	109 ¹ / ₂
225	66	144	60	31 ³ / ₈	31 ³ / ₈	21 ³ / ₄	37 ⁵ / ₈	120	20 ¹ / ₄	52	48 ³ / ₄	133	49 ¹ / ₈	133 ³ / ₈
230	66	144	60	36 ⁷ / ₈	36 ⁷ / ₈	18 ⁵ / ₈	33	120	20 ¹ / ₄	52	48 ³ / ₄	133	49 ¹ / ₈	133 ³ / ₈

NOTE: All dimensions in inches subject to manufacturing tolerances.

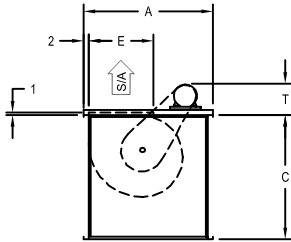
Dimensions

Single Blower Models – Vertical Units

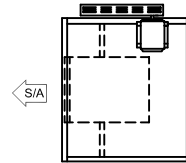
C000500

UNIT COMPONENTS

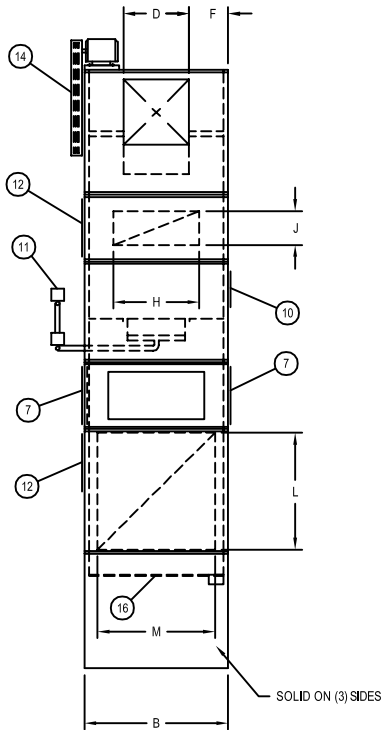
- | | | | |
|--------------------------------|-----------------------|-------------------------|--|
| 1. Inlet Damper | 6. Blower section | 11. Gas piping manifold | 15. TracRite airflow station
(Required for ETL listed
Return Air Unit) |
| 2. R/A section (before burner) | 7. Filter access | 12. R/A access | 16. Screen |
| 3. V-bank | 8. Adjustable profile | 13. Return Air damper | |
| 4. Burner section | 9. Control cabinet | 14. Belt guard | |
| 5. R/A section (after burner) | 10. Access door | | |



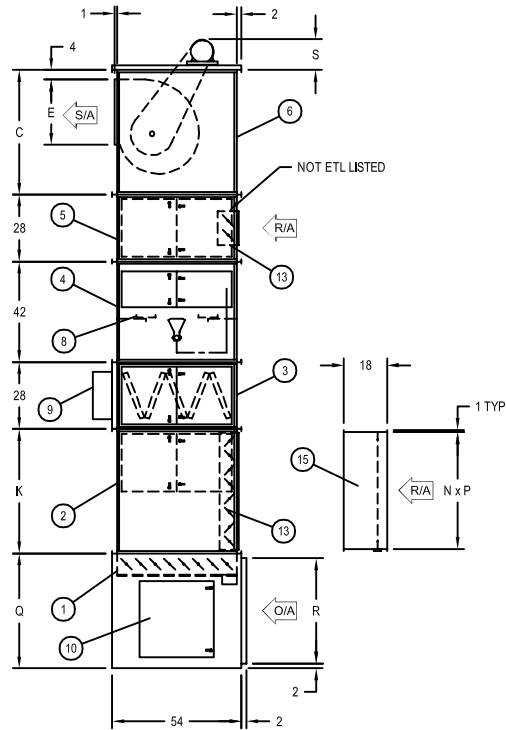
VST DISCHARGE



PLAN VIEW



SIDE VIEW



FRONT VIEW

NOTE: Canadian standards do not allow recirculation on direct fired units.

Model	Dimensions															
	A	B	C	D	E	F	H	J	K	L	M	N	P	Q	R	S
109	29	45	33	12	10 ¹ / ₂	16 ¹ / ₂	30	8 ¹ / ₄	28	23 ³ / ₄	34	25 ¹ / ₈	34 ¹ / ₂	36	32	17 ¹ / ₄
112	29	45	33	15 ³ / ₄	13 ³ / ₈	14 ⁵ / ₈	30	8 ¹ / ₄	28	23 ³ / ₄	34	25 ¹ / ₈	34 ¹ / ₂	36	32	17 ¹ / ₄
115	37 ¹ / ₄	51	43	18 ³ / ₄	16	16 ¹ / ₈	30	14 ¹ / ₄	43	39 ³ / ₄	40	40 ¹ / ₄	40 ¹ / ₂	36	32	17 ¹ / ₄
118	37 ¹ / ₄	51	43	22	19	14 ¹ / ₂	30	14 ¹ / ₄	43	39 ³ / ₄	40	40 ¹ / ₄	40 ¹ / ₂	36	32	20
120	54	60	52	24 ⁷ / ₈	24 ⁷ / ₈	17 ⁹ / ₁₆	48	14 ¹ / ₄	52	48 ³ / ₄	49	49 ¹ / ₈	49 ¹ / ₂	48	44	20
122	54	60	52	27 ³ / ₈	27 ³ / ₈	16 ⁵ / ₁₆	48	14 ¹ / ₄	52	48 ³ / ₄	49	49 ¹ / ₈	49 ¹ / ₂	48	44	20
125	66	72	60	31 ³ / ₈	31 ³ / ₈	20 ⁵ / ₁₆	60	20 ¹ / ₄	52	48 ³ / ₄	61	49 ¹ / ₈	61 ¹ / ₂	48	44	21
130	66	72	60	36 ⁷ / ₈	36 ⁷ / ₈	17 ⁹ / ₁₆	60	20 ¹ / ₄	52	48 ³ / ₄	61	49 ¹ / ₈	61 ¹ / ₂	48	44	21

NOTE: All dimensions in inches subject to manufacturing tolerances.

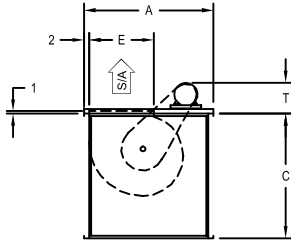
Dimensions

Twin Blower Models – Vertical Units

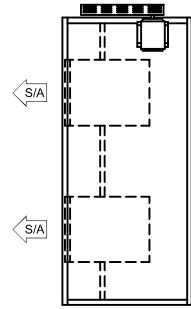
C000499

UNIT COMPONENTS

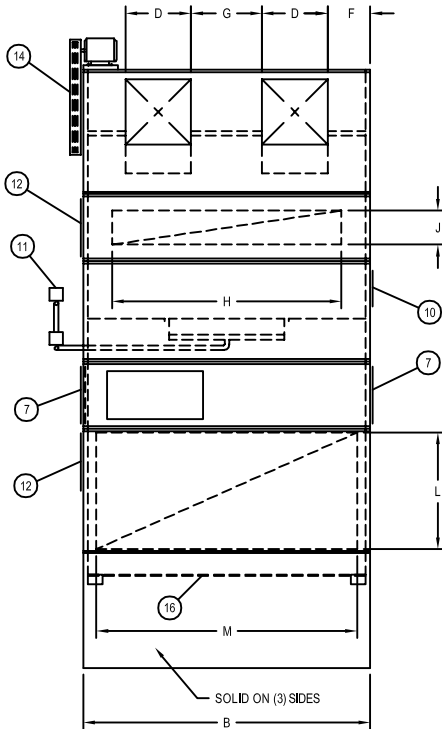
- | | | | |
|--------------------------------|-----------------------|-------------------------|--|
| 1. Inlet damper | 6. Blower section | 11. Gas piping manifold | 15. TracRite airflow station
(Required for ETL listed
Return Air Unit) |
| 2. R/A section (before burner) | 7. Filter access | 12. R/A access | 16. Screen |
| 3. V-bank | 8. Adjustable profile | 13. R/A damper | |
| 4. Burner section | 9. Control cabinet | 14. Belt guard | |
| 5. R/A section (after burner) | 10. Access door | | |



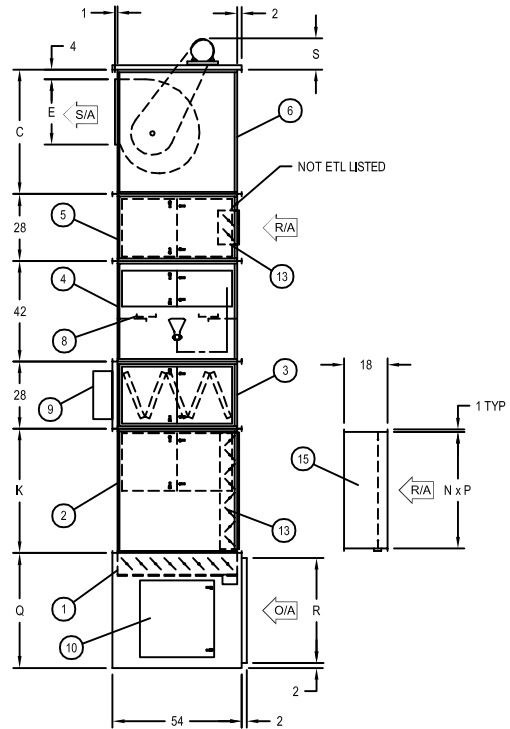
VST DISCHARGE



PLAN VIEW



SIDE VIEW



FRONT VIEW

NOTE: Canadian standards do not allow recirculation on direct fired units.

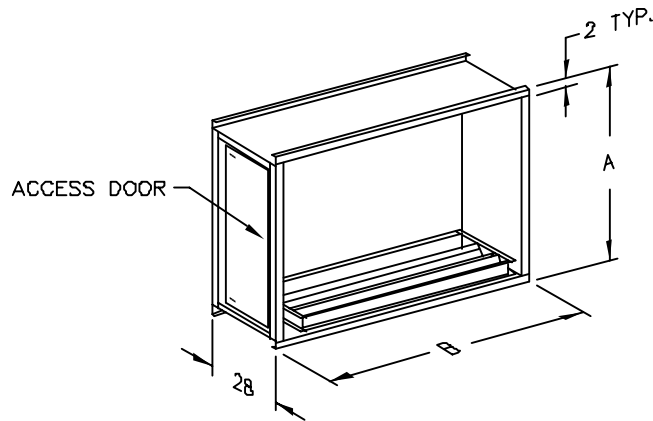
Model	Dimensions																
	A	B	C	D	E	F	G	H	J	K	L	M	N	P	Q	R	S
215	37 ¹ / ₄	93	43	18 ³ / ₄	16	16 ¹ / ₈	22 ¹ / ₂	79	10	43	39 ³ / ₄	82	40 ¹ / ₄	82 ¹ / ₂	36	32	18 ¹ / ₂
218	37 ¹ / ₄	93	43	22	19	13 ¹ / ₄	22 ¹ / ₂	79	10	43	39 ³ / ₄	82	40 ¹ / ₄	82 ¹ / ₂	36	32	22
220	54	120	52	24 ⁷ / ₈	24 ⁷ / ₈	20 ¹ / ₄	29 ⁵ / ₈	96	14 ¹ / ₄	52	48 ³ / ₄	109	49 ¹ / ₈	109 ¹ / ₂	48	44	22
222	54	120	52	27 ³ / ₈	27 ³ / ₈	17 ³ / ₄	29 ⁵ / ₈	96	14 ¹ / ₄	52	48 ³ / ₄	109	49 ¹ / ₈	109 ¹ / ₂	48	44	23 ¹ / ₂
225	66	144	60	31 ³ / ₈	31 ³ / ₈	21 ³ / ₄	37 ⁵ / ₈	120	20 ¹ / ₄	52	48 ³ / ₄	133	49 ¹ / ₈	133 ³ / ₈	48	44	32 ³ / ₄
230	66	144	60	36 ⁷ / ₈	36 ⁷ / ₈	18 ⁵ / ₈	33	120	20 ¹ / ₄	52	48 ³ / ₄	133	49 ¹ / ₈	133 ³ / ₈	48	44	32 ³ / ₄

NOTE: All dimensions in inches subject to manufacturing tolerances.

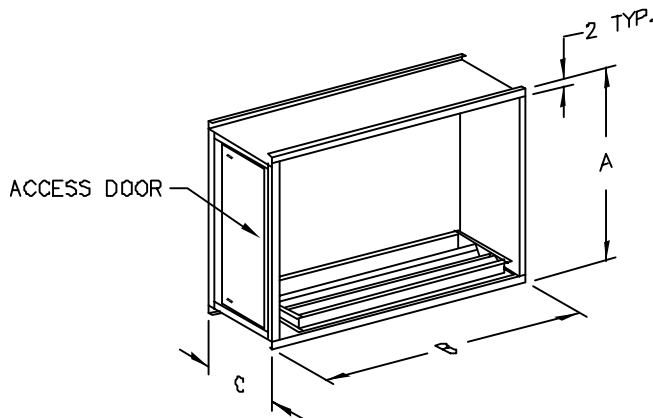
Dimensions

Return Air Section

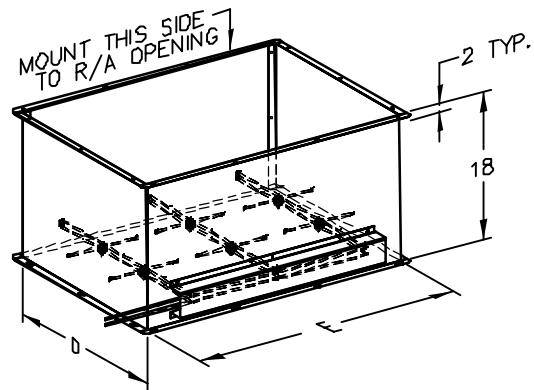
C000503



RETURN AIR
(AFTER BURNER SECTION)



RETURN AIR
(BEFORE BURNER SECTION)



R/A AIR PROBE BOX

NOTE: Canadian standards do not allow recirculation on direct fired units.

Dimension	MODEL								
	109-112	115-118	120-122	125-130	215-218	220-222	225-230		
A	29	37 ¹ / ₄	54	66	37 ¹ / ₄	54	66		
B	45	51	60	72	93	120	144		
C	28	43	52	52	43	52	52		
D	25 ¹ / ₈	40 ¹ / ₄	49 ¹ / ₈	49 ¹ / ₈	40 ¹ / ₄	49 ¹ / ₈	49 ¹ / ₈		
E	34 ¹ / ₂	40 ¹ / ₂	49 ¹ / ₂	61 ¹ / ₂	82 ¹ / ₂	109 ¹ / ₂	133 ³ / ₈		
Model		109-112	115-118	120-122	125-130	215-218	220-222	225-230	
R/A Opening Size		Before Burner	24 ³ / ₄ X 34	39 ³ / ₄ X 40	48 ³ / ₄ X 49	48 ³ / ₄ X 61	39 ³ / ₄ X 82	48 ³ / ₄ X 109	48 ³ / ₄ X 133
		After Burner	8 ¹ / ₄ X 30	14 ¹ / ₄ X 30	14 ¹ / ₄ X 48	20 ¹ / ₄ X 60	10 X 79	14 ¹ / ₄ X 96	20 ¹ / ₄ X 120

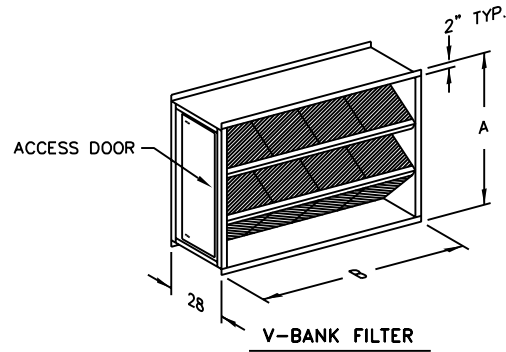
NOTE: R/A openings shall be centered on floor.

NOTE: All dimensions in inches subject to manufacturing tolerances.

Filter Dimensions

C000502

V-Bank Filter and Filter Information



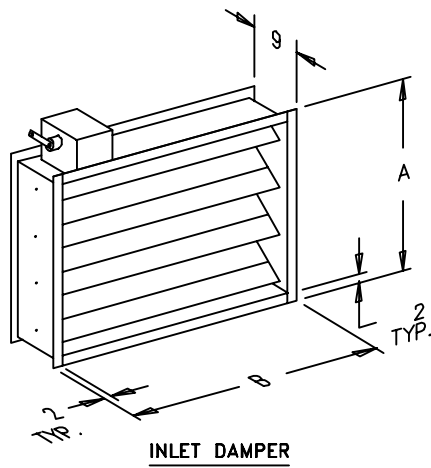
Dimension	MODEL						
	109-112	115-118	120-122	125-130	215-218	220-222	225-230
A	29	37 ¹ / ₄	54	66	37 ¹ / ₄	54	66
B	45	51	60	72	93	120	144
Model	109-112	115-118	120-122	125-130	215-218	220-222	225-230
V-Bank Filter Qty. & Size	(4) 20 x 20 x 2	(9) 16 x 20 x 2	(10) 20 x 25 x 2	(24) 16 x 20 x 2	(18) 15 x 20 x 2	(35) 16 x 20 x 2	(42) 20 x 20 x 2

NOTE: All dimensions in inches subject to manufacturing tolerances.

Dimensions

Inlet Damper

C000501

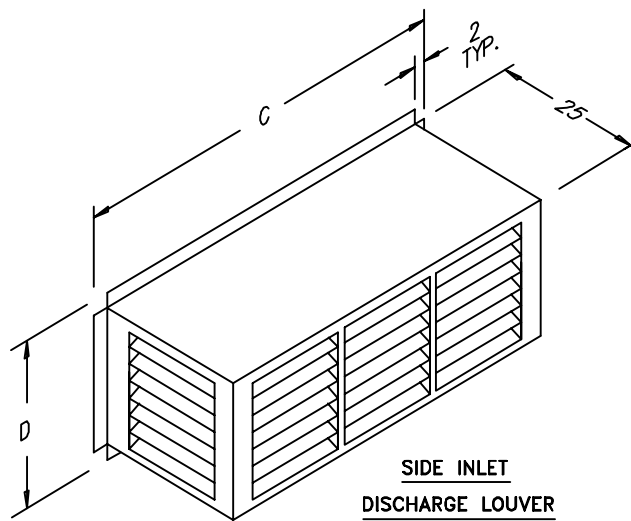


Dimension	Model						
	109-112	115-118	120-122	125-130	215-218	220-222	225-230
A	29	37 ¹ / ₄	54	66	37 ¹ / ₄	54	66
B	45	51	60	72	93	120	144

NOTE: All dimensions in inches subject to manufacturing tolerances.

Discharge Louvers

C000501



Dimension	Model						
	109-112	115-118	120-122	125-130	215-218	220-222	225-230
C	19 ¹ / ₈	23	28 ¹ / ₂	40 ¹ / ₈	67 ³ / ₄	85 ³ / ₄	108 ¹ / ₈
D	14 ³ / ₈	20 ³ / ₈	39 ¹ / ₄	39 ¹ / ₄	20 ³ / ₈	39 ¹ / ₄	39 ¹ / ₄

NOTE: All dimensions in inches subject to manufacturing tolerances.